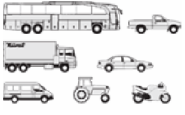




FIAT - Ø 70

06-154200-50-STD



**Motor Özellikleri**  
(Engine Specifications)

İmalatçı (Manufacturer):  
FIAT  
Çap (Diameter): Ø 70  
FM Grup No: 2802

**156A2.000-M204BA.10.0**

4 Sil. Benzinli 999cc 33  
Kw (45 PS)  
PANDA 1000 (FIRE),  
UNO 45 FIRE  
1985 - 1997

**156.A2.246-156.C1.046**

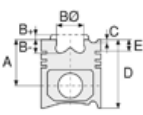
4 Sil. Benzinli 999cc 33  
Kw (45 PS) 9, 5:1 UNO 45SL  
1.ie, 45 SX 1.0 ie  
1986 - 1997

**160A3.000-M204BA.10.0**

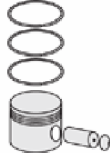
4 Sil. Benzinli 1108cc 41  
Kw (56 PS) TIPO 1100  
(FIRE), UNO  
60 S 1.1 ie, 60 SX 1.1 ie  
1987 - 2000

**M204 A.A.11**

4 Sil. Benzinli 1108cc 40  
Kw (54 PS) 9, 6:1  
PANDA 1100 ie, UNO 60 ie



**Piston Ölçüleri**  
(Piston Dimensions)



**Piston Parça No**  
(Piston Part No)



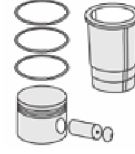
**Segman Seti**  
(Ring Set)

06-154200-50-STD

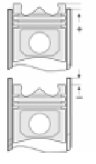
1.500  CRP IKA  
1.500  P STD  
3.000  CRP ST



**Silindir Gömleği**  
(Liner)



**Silindir Kit**  
(Assembly Set)



**Piston - Blok Montaj**  
Yüksekliği  
(Piston - Block  
Assembly Height)

