



FORD PKW - Ø 90,8

06-780300-90-STD

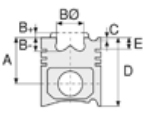


Motor Özellikleri
(Engine Specifications)

İmalatçı (Manufacturer):
FORD PKW
Çap (Diameter): 90,8
FM Grup No: 2932

TL20 Efi

4 Sil. Benzinli 1993cc 8,5:1
GRANADA Mk 2.0i GL,
Mk 1 2.0i GHIA, Mk 1 2.0i
GHIA X, SIERRA 2.0i GLSi,
2.0i GHIA, 2, SIERRA
SAPPHIRE 2.0i GLi, 2.0 G,
TRANSIT 100/120/130/
150/160/19



Piston Ölçüleri
(Piston Dimensions)



Piston Parça No
(Piston Part No)



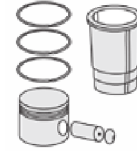
Segman Seti
(Ring Set)

06-780300-90-STD
06-780307-90 0,50 mm

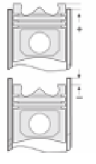
1.600  CKP IKA
2.000  P STD
4.000  CRP STD



Silindir Gömleği
(Liner)



Silindir Kit
(Assembly Set)



Piston - Blok Montaj
Yüksekliği
(Piston - Block
Assembly Height)

