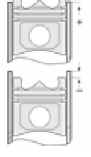
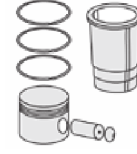
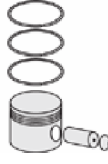
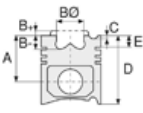




CUMMINS - Ø 114,02

86-75011-STD



Motor Özellikleri
(Engine Specifications)

Piston Ölçüleri
(Piston Dimensions)

Piston Parça No
(Piston Part No)

Segman Seti
(Ring Set)

Silindir Gömleği
(Liner)

Silindir Kit
(Assembly Set)

Piston - Blok Montaj
Yüksekliği
(Piston - Block
Assembly Height)

İmalatçı (Manufacturer):
Cummins
Çap (Diameter): 114,02
FM Grup No: 2127

A : 74.250
B- : 22.250
BØ : 65.020
C1 : 1.050
D : 104.350
E : 8.430

86-75011-STD
86-75011-STD

3.500
3.000
4.050

QSL 8.3L
6 Sil. Dizel

Pim: 45 x 91



Piston Özellikleri
(Piston Features)

Yağ Püskürtme Oyuğu
(Oil Jet Cut-out)
Gözarası Konik
(Conical Eye Gap)

