



CUMMINS - Ø 114

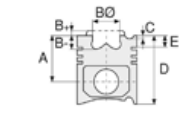
86-75012-STD



Motor Özellikleri
(Engine Specifications)

İmalatçı (Manufacturer):
Cummins
Çap (Diameter): 114
FM Grup No: 2127

ISL 8.3L
6 Sil. Dizel 380 HP



Piston Ölçüleri
(Piston Dimensions)

A : 74.250
B- : 14.750
BØ : 83.000
C1 : 1.050
D : 104.350
E : 8.430

Pim: 45 x 91



Piston Özellikleri
(Piston Features)

Yağ Püskürtme Oyuğu
(Oil Jet Cut-out)
Gözarası Konik
(Conical Eye Gap)



Piston Parça No
(Piston Part No)

86-75012-STD
86-75012-STD

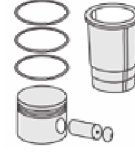


Segman Seti
(Ring Set)

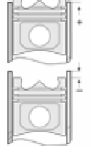
3.500
3.000
4.050



Silindir Gömleği
(Liner)



Silindir Kit
(Assembly Set)



Piston - Blok Montaj
Yüksekliği
(Piston - Block
Assembly Height)

