



BMW- Ø 80

87-70208-STD

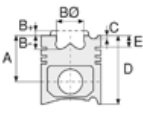


Motor Özellikleri
(Engine Specifications)

İmalatçı (Manufacturer):
BMW
Çap (Diameter): 80
FM Grup No: 1441

M54 B22

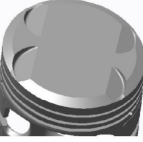
6 Sil. Benzinli 2171cc 141
KW / 170 PS 10,8:1
320i 2.2 24V (E46),
520i 2.2 24V (E39),
520i 2.2 24V(E60),
Z3 2.2i 24V(E36),
Z4 2.2i 24V (E85)
2000 - 2006



Piston Ölçüleri
(Piston Dimensions)

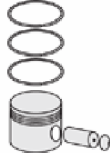
A : 29.600
C1 : 2.900
C2 : 3.400
D : 49.500
E : 6.200

Pim: 22 x 51



Piston Özellikleri
(Piston Features)

Gözarası Düz
(Flat Eye Gap)



Piston Parça No
(Piston Part No)

87-816100-02
87-70208-STD

87-816107-02
87-70208 050



Segman Seti
(Ring Set)

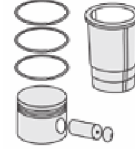
06-816100-00-STD
06-816107-00 0,50 mm

1.200 CKP ST
1.500 P GOE
2.000 P GOE

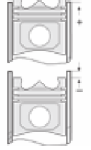
Goetze® LKZ-Ring® /
Yağ segmanı matkap
delikli (Oil Ring Drill
Perforated)



Silindir Gömleği
(Liner)



Silindir Kit
(Assembly Set)



Piston - Blok Montaj
Yüksekliği
(Piston - Block
Assembly Height)

