



BMW- Ø 80

87-70209-STD



**Motor Özellikleri**  
(Engine Specifications)

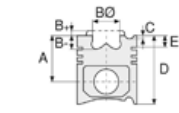
İmalatçı (Manufacturer):  
BMW  
Çap (Diameter): 80  
FM Grup No: 1438

**M41**

4 Sil. Dizel 1669cc 66  
KW(90 PS) 22:1  
Turbo Intercooler  
318  
COMPACT/TDS/TUURING  
SE  
1995...

**M51 D25WA**

6 Sil. Dizel 2498cc 105  
KW(143 PS) 22:1  
Turbo Intercooler /  
OPEL VE LAND ROVER  
İLE ORTAK MOTOR  
(Common Engine With  
Opel And Land Rover)  
325 TDS, 525  
TDS/TOURING, 725 TDS  
1990...



**Piston Ölçüleri**  
(Piston Dimensions)

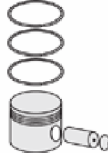
A : 39.450  
B- : 2.500  
D : 62.450  
E : 9.900

Pim: 27 x 63



**Piston Özellikleri**  
(Piston Features)

Segman Taşıyıcı  
(Ring Carrier)  
Çelik Plaka  
(Steel Strut)  
Soğutma Kanallı  
(Coolin Gallery)  
Yağ Püskürtme Oyuğu  
(Oil Jet Cut-out)  
Gözarası Düz  
(Flat Eye Gap)



**Piston Parça No**  
(Piston Part No)

87-704500-02  
87-70209-STD

87-704507-02  
87-70209 0,50



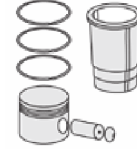
**Segman Seti**  
(Ring Set)

06-704500-00-STD  
06-704507-00 0,50 mm

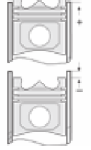
3.000 CRP KV1  
1.750 P IKA  
3.000 CRP STD



**Silindir Gömleği**  
(Liner)



**Silindir Kit**  
(Assembly Set)



**Piston - Blok Montaj**  
**Yüksekliği**  
(Piston - Block  
Assembly Height)

1 Kertik conta (Notch Seal)  
ile (1.55 mm) +0,64 /+0.78

2 Kertik conta (Notch Seal)  
ile (1.68 mm) +0.79 / +0.91

3 Kertik conta (Notch Seal)  
ile (1.87 mm) +0.92/+1.08

