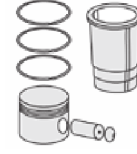
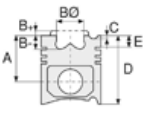




BMW- Ø 80

87-70210-STD



Motor Özellikleri
(Engine Specifications)

İmalatçı (Manufacturer):
BMW
Çap (Diameter): 80
FM Grup No: 1402

M50/B20
6 Sil. Benzinli 1991cc
110Kw (150PS) 11:1
24v injection / VANOSLU
320i Coupe, 320i, 520i,
520i Touring
1992 - 1995

Piston Ölçüleri
(Piston Dimensions)

A : 33.500
B : 1.860
C1 : 2.940
C2 : 2.940
D : 51.000
E : 8.860

Pim: 22 x 51



Piston Özellikleri
(Piston Features)

Çelik Plaka
(Steel Strut)
Gözarası Düz
(Flat Eye Gap)

Piston Parça No
(Piston Part No)

87-705000-02
87-70210-STD
87-705005-02
87-70210 025
87-705007-02
87-70210 050

Segman Seti
(Ring Set)

06-705000-00-STD
06-705005-00 0,25 mm
06-705007-00 0,50 mm

1.500  CRP KV1
1.500  P STD
2.000  P KV1

Silindir Gömleği
(Liner)

Silindir Kit
(Assembly Set)

Piston - Blok Montaj
Yüksekliği
(Piston - Block
Assembly Height)

