



BMW- Ø 84

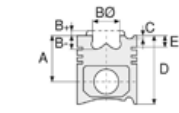
87-70215-STD



Motor Özellikleri
(Engine Specifications)

İmalatçı (Manufacturer):
BMW
Çap (Diameter): 84
FM Grup No: 1410

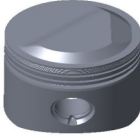
M10B 16E21
4 Sil. Benzinli 1573cc
66Kw (90PS) 8,3:1
316
1975 - 1980



Piston Ölçüleri
(Piston Dimensions)

A : 46.700
B : 6.000
D : 84.700
E : 8.200

Pim: 22 x 69



Piston Özellikleri
(Piston Features)

Çelik Plaka
(Steel Strut)
Gözarası Düz
(Flat Eye Gap)



Piston Parça No
(Piston Part No)

87-701800-02
87-70215-STD

87-701805-02
87-70215 025

87-701807-02
87-70215 050



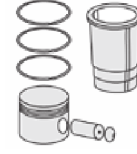
Segman Seti
(Ring Set)

06-701800-00-STD
06-701805-00 0,25 mm
06-701807-00 0,50 mm

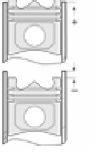
1.750  CRP KV1
2.000  P STD
4.000  CRP STD



Silindir Gömleği
(Liner)



Silindir Kit
(Assembly Set)



Piston - Blok Montaj
Yüksekliği
(Piston - Block
Assembly Height)

