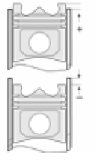
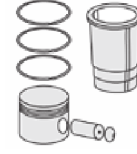
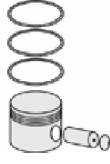
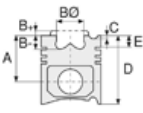




BMW- Ø 84

87-70216-STD



Motor Özellikleri
(Engine Specifications)

İmalatçı (Manufacturer):
BMW
Çap (Diameter): 84
FM Grup No: 1413

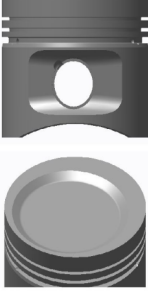
M40B 16ME

4 Sil. Benzinli 1596cc
73Kw (100PS) 9:1
Enjektörlü (With Injector)
316i
1988 - 1992

Piston Ölçüleri
(Piston Dimensions)

A : 41.150
B- : 2.750
BØ : 69.000
BX : 3.200
BY : 4.000
D : 67.150
E : 7.600

Pim: 22 x 54,3



Piston Özellikleri
(Piston Features)

Çelik Plaka
(Steel Strut)
Gözarası Düz
(Flat Eye Gap)

Piston Parça No
(Piston Part No)

87-702600-22
87-70216-STD
87-702605-22
87-70216-025
87-702607-22
87-70216-050

87-702600-32
87-70216-STD A

87-702605-32
87-70216-025 A

87-702607-32
87-70216-050 A

Segman Seti
(Ring Set)

06-702600-50-STD
06-702605-50 0,25 mm
06-702607-50 0,50 mm

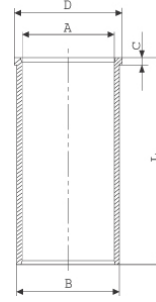
1.500 CRP KV1
1.750 P STD
3.000 CRP ST

06-702600-20-STD
06-702605-20 0,25 mm
06-702607-20 0,50 mm

1.500 CRP KV1
1.750 P STD
3.000 CRP STD

Silindir Gömleği
(Liner)

14-020710-00 D
B : 87.000
L : 137.000
D : 88.500
C : 6.000



Silindir Kit
(Assembly Set)

Piston - Blok Montaj
Yüksekliği
(Piston - Block
Assembly Height)

