



BMW- Ø 84

87-70224-STD



Motor Özellikleri
(Engine Specifications)

İmalatçı (Manufacturer):
BMW
Çap (Diameter): 84
FM Grup No: 1434

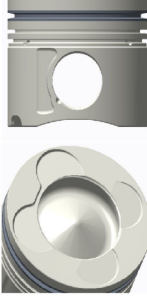
M47N
4 Sil. Dizel 2000cc
E-87 118D, E-90 318 D,
E-91 318D
2001...



Piston Ölçüleri
(Piston Dimensions)

A : 44.870
B- : 14.500
BØ : 47.500
C1 : 1.360
C2 : 1.480
D : 70.370
E : 7.870

Pim: 30 x 68



Piston Özellikleri
(Piston Features)

Segman Taşıyıcı
(Ring Carrier)
Soğutma Kanallı
(Coolin Gallery)
Yağ Püskürtme Oyuğu
(Oil Jet Cut-out)
Gözarası Konik
(Conical Eye Gap)



Piston Parça No
(Piston Part No)

87-815700-02
87-70224-STD
87-815707-02
87-70224-050



Segman Seti
(Ring Set)

06-815700-00-STD
06-815707-00 0,50

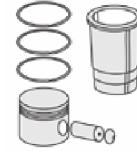
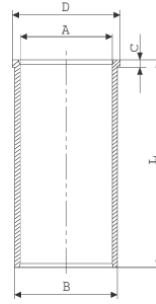
3.000 CKP KV1
2.000 P F14
2.000 CRP KV1

Goetze® LKZ-Ring® / Yağ
segmanı matkap delikli
(Oil Ring Drill Perforated)

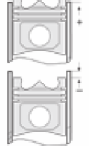


Silindir Gömleği
(Liner)

14-021780-00 D
B : 87.000
L : 149.000
D : 88.500
C : 6.000



Silindir Kit
(Assembly Set)



Piston - Blok Montaj
Yüksekliği
(Piston - Block
Assembly Height)

1.45mm conta(Notch)
+0,45/+0,56

1,55mm conta(Notch)
+0,56/+0,65

1,65mm conta(Notch)
+0,65/+0,75

