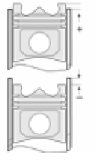
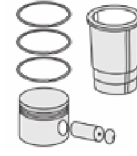
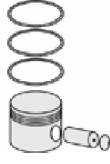
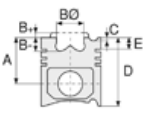




BMW- Ø 84

87-70228-STD



Motor Özellikleri
(Engine Specifications)

Piston Ölçüleri
(Piston Dimensions)

Piston Parça No
(Piston Part No)

Segman Seti
(Ring Set)

Silindir Gömleği
(Liner)

Silindir Kit
(Assembly Set)

Piston - Blok Montaj
Yüksekliği
(Piston - Block
Assembly Height)

İmalatçı (Manufacturer):
BMW
Çap (Diameter): 84
FM Grup No: 1442

A : 29.800
C1 : 5.100
C2 : 5.200
D : 50.800
E : 6.900

87-815900-02
87-70228 STD

87-815907-02
87-70228 050

06-815900-50-STD
06-815907-50 0,50 mm

1.200 NT ST
1.500 P GOE
2.000 CR ST

N42 B18
4 Sil. Benzinli 1796cc 85
Kw(116 PS) 10,25:1
316 1.8i 16V (E46)
2001 - 2004

Pim: 20 x 50



N42 B20
4 Sil. Benzinli 1995cc
105 Kw(143 PS) 10:1
318 2.0i 16V (E46)
2001 - 2004



N45 B16
4 Sil. Benzinli 1596cc
85 Kw(116 PS) 10,25:1
116 1.6i 16V (E87),
316 1.6i 16V (E46),
316 1.6i 16V (E90),
316 1.6i 16V (E92)
2004 - 2007

Piston Özellikleri
(Piston Features)

Gözarası Konik
(Conical Eye Gap)

N46 B20
4 Sil. Benzinli 1995cc
105 Kw(143 PS) 10,20:1
318 2.0i 16V (E46)
2004 - 2005

