



BMW- Ø 84

87-70230-STD



Motor Özellikleri
(Engine Specifications)

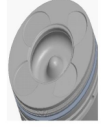
İmalatçı (Manufacturer):
BMW
Çap (Diameter): 84
FM Grup No: 1436

M57D30
6 Sil. Dizel 2926cc
135 Kw (184 PS) 18:1
Turbo intercool /
Land Rover ile ortak motor
(Common Engine With
Land Rover)
FREE LANDER M47 D
20R / RANGE ROVER TD6
330 D, 530 D, 730 D
1999...

Piston Ölçüleri
(Piston Dimensions)

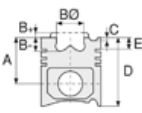
A : 47.000
B- : 16.500
BØ : 41.550
C1 : 1.360
C2 : 1.480
D : 71.000
E : 9.000

Pim: 30 x 68



Piston Özellikleri
(Piston Features)

Segman Taşıyıcı
(Ring Carrier)
Soğutma Kanallı
(Coolin Gallery)
Yağ Püskürtme Oyuğu
(Oil Jet Cut-out)
Gözarası Konik
(Conical Eye Gap)



Piston Parça No
(Piston Part No)

87-114400-02
87-70230-STD
87-114405-02
87-70230 025
87-115507-02
87-70230 050



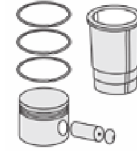
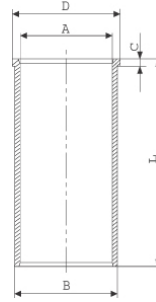
Segman Seti
(Ring Set)

06-114400-00-STD
06-114405-00 0,25 mm
06-114407-00 0,50 mm
3.000 CKP KVI
2.000 P STD
3.000 CRP STD

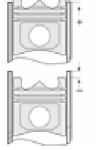


Silindir Gömleği
(Liner)

14-217800-00 D
B : 87.000
L : 149.000
D : 88.500
C : 6.000



Silindir Kit
(Assembly Set)



Piston - Blok Montaj
Yüksekliği
(Piston - Block
Assembly Height)

1.Kertik conta(Notch Seal)
ile +0,80 /+0,90

2.Kertik conta (Notch Seal)
ile +0,90 / +1,00

