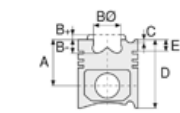


Motor Özellikleri
(Engine Specifications)

İmalatçı (Manufacturer):
Cummins
Çap (Diameter): 114
FM Grup No: 2107

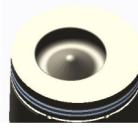
6CTAA 8,3
6 Sil. Dizel 8267cc
194 Kw (263PS) 16:1
2626 FORD CARGO
KAMYON (Ford Cargo
Truck), 270-26
FATİH KAMYON
(Fatih Truck)



Piston Ölçüleri
(Piston Dimensions)

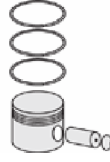
A : 78.820
B- : 25.430
BØ : 60.000
BX : 5.500
D : 120.320
E : 14.320

Pim: 45 x 91,1



Piston Özellikleri
(Piston Features)

Çift Segman Taşıyıcı
Gözarası Konik
(Double Ring Carrier
Conical Eye Gap)



Piston Parça No
(Piston Part No)

87-155600-22
87-70419-STD



Segman Seti
(Ring Set)

06-155600-10-STD

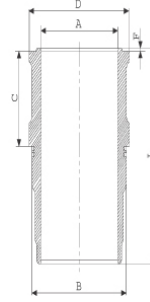
3.500 CRP KV1
3.000 P F14
4.000 CR STD

Goetze® LKZ-Ring®

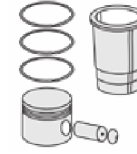


Silindir Gömleği
(Liner)

14-746260-10-WH
B : 125.685
L : 238.370
D : 130.948
C : 123.060
F : 1.250

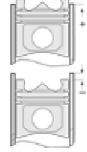


O-RİNG BİLGİ
50-350476-00/0
1x 120*124*4 FPM



Silindir Kit
(Assembly Set)

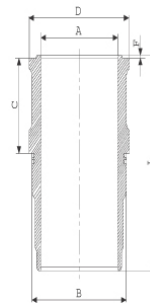
89-155600-82-STD
89-70419-STD



Piston - Blok Montaj
Yüksekliği
(Piston - Block
Assembly Height)

+0,20 / +0,50

14-745340-00-WH
B : 125.685
L : 238.350
D : 133.000
C : 123.050
F : 1.250



O-RİNG BİLGİ
50-350476-00/0
1x 120*124*4 FPM

89-155600-62-STD
89-70419-STD

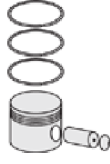




Motor Özellikleri
(Engine Specifications)



Piston Ölçüleri
(Piston Dimensions)



Piston Parça No
(Piston Part No)

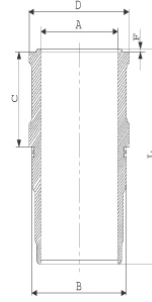


Segman Seti
(Ring Set)



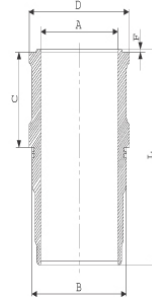
Silindir Gömleği
(Liner)

14-740010-00-WH
B : 125.685
L : 238.370
D : 130.948
C : 123.060
F : 1.250

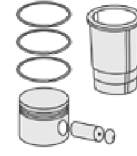


O-RİNG BİLGİ
50-350476-00/0
1x 120*124*4 FPM

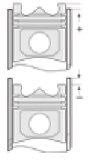
14-740020-00-WH
B : 125.685
L : 235.370
D : 130.948
C : 123.039
F : 1.250



3,00mm Kısa (3,00mm
Short)



Silindir Kit
(Assembly Set)

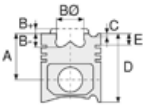


Piston - Blok Montaj
Yüksekliği
(Piston - Block
Assembly Height)

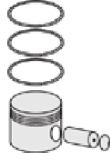




Motor Özellikleri
(Engine Specifications)



Piston Ölçüleri
(Piston Dimensions)



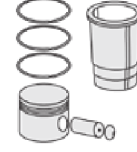
Piston Parça No
(Piston Part No)



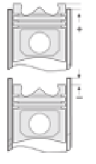
Segman Seti
(Ring Set)



Silindir Gömleği
(Liner)



Silindir Kit
(Assembly Set)

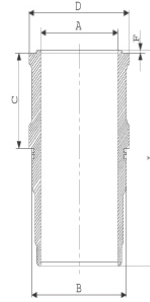


Piston - Blok Montaj
Yüksekliği
(Piston - Block
Assembly Height)

14-740030-00-WH
B : 125.685
L : 238.370
D : 131.200
C : 124.250
F : 1.250

C:1,20mm Uzun
(1,20mm Long)

14-740040-00-WH
B : 125.685
L : 235.370
D : 131.200
C : 124.250
F : 1.250



C:1,20mm Uzun
(1,20mm Long)

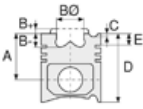
14-740050-00-WH
B : 125.685
L : 235.370
D : 131.200
C : 124.550
F : 1.250

C:1,50 mm uzun
(1,50mm Long)

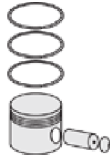




Motor Özellikleri
(Engine Specifications)



Piston Ölçüleri
(Piston Dimensions)



Piston Parça No
(Piston Part No)



Segman Seti
(Ring Set)

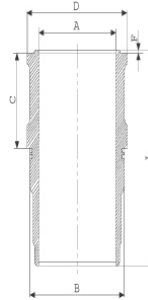


Silindir Gömleği
(Liner)

114-740080-00-WH
B: 125.685
L: 235.370
D: 131.200
C: 124.550
F: 1.250

C:1,50 mm uzun

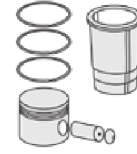
14-749630-00-WH
B: 125.685
L: 235.370
D: 130.948
C: 123.039
F: 1.250



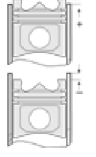
O-RING Bilgi
50-35047-60/O
1x 120*124*4 FPM

14-749632-00-WH
B: 125.685
L: 235.370
D: 130.948
C: 124.550
F: 1.250

C: 1,50 mm uzun
(1,50mm Long)



Silindir Kit
(Assembly Set)

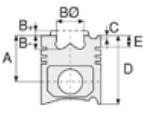


Piston - Blok Montaj
Yüksekliği
(Piston - Block
Assembly Height)

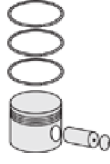




Motor Özellikleri
(Engine Specifications)



Piston Ölçüleri
(Piston Dimensions)



Piston Parça No
(Piston Part No)



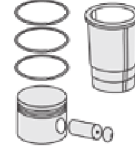
Segman Seti
(Ring Set)



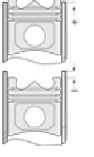
Silindir Gömleği
(Liner)

14-749633-00-WH
B : 125.685
L : 235.370
D : 130.948
C : 126.050
F : 1.250

C : 3,00 mm uzun
(1,20mm Long)



Silindir Kit
(Assembly Set)



Piston - Blok Montaj
Yüksekliği
(Piston - Block
Assembly Height)

