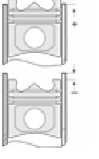
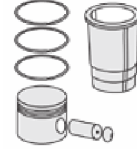
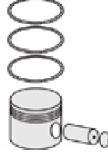
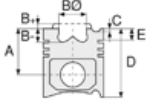




IVECO LKW - Ø 104

87-70619-STD



Motor Özellikleri
(Engine Specifications)

İmalatçı (Manufacturer):
IVECO LKW
Çap (Diameter): Ø 104
FM Grup No: 4089

F4AFE411 E
4 Sil. Dizel 4485cc
118 KW-160 PS
60E16-60E16P-
75E19-75E19P

Piston Ölçüleri
(Piston Dimensions)

A : 62.700
B- : 17.700
BØ : 75.200
D : 96.400
E : 13.100

Pim: 40 x 87,5



Piston Özellikleri
(Piston Features)

Segman Taşıyıcı
(Ring Carrier)
Soğutma Kanallı
(Coolin Gallery)
Yağ Püskürtme Oyuğu
(Oil Jet Cut-out)
Gözarası Konik
(Conical Eye Gap)

Piston Parça No
(Piston Part No)

87-858200-22
87-70619-STD
87-858206-22
87-70619 0,40

Segman Seti
(Ring Set)

06-858200-00-STD
06-858206-00 0,40
3.000 CKS KV1
2.385 P GOE
4.000 CR GOE

Silindir Gömleği
(Liner)

Silindir Kit
(Assembly Set)

Piston - Blok Montaj
Yüksekliği
(Piston - Block
Assembly Height)

