



FIAT - Ø 70,8

87-70704-STDB

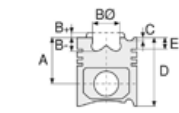


Motor Özellikleri
(Engine Specifications)

İmalatçı (Manufacturer):
FIAT
Çap (Diameter): Ø 70,8
FM Grup No: 2820

188 A 4000 /
223 A 5000

4 Sil. Benzinli 1241cc
44Kw (60PS) 9, 8:1
8 valve
ALBEA 1.2 8v,
DOBLO 1.2 8v,
PALIO 1.2 8v, SIENA 1.2 8v
2000...



Piston Ölçüleri
(Piston Dimensions)

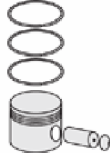
A : 28.000
B- : 2.000
BØ : 60.500
C1 : 1.400
D : 48.000
E : 4.900

Pim : 18 x 53



Piston Özellikleri
(Piston Features)

Biyel Koluna Sıkı Geçme
(Close-Fit To Connecting Rod)
Göz Arası Konik
(Conical Eye Gap)



Piston Parça No
(Piston Part No)

87-835900-12
87-70704-STDB
87-835906-12
87-70704-040B



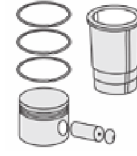
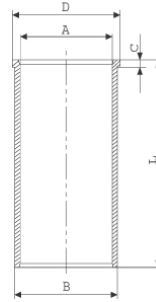
Segman Seti
(Ring Set)

06-835900-30-STD
06-835906-30-0,40 mm
1.200 CKP KV1
1.200 P STD
2.500 CRP GOE
Goetze® LKZ-Ring®

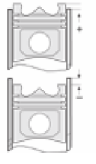


Silindir Gömleği
(Liner)

14-021080-00-D
B : 73.800
L : 128.000
D : 75.000
C : 5.000



Silindir Kit
(Assembly Set)



Piston - Blok Montaj
Yüksekliği
(Piston - Block
Assembly Height)

