



IVECO LKW - Ø 94,4

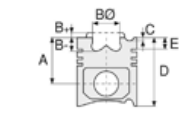
87-70713-STD



Motor Özellikleri
(Engine Specifications)

İmalatçı (Manufacturer):
IVECO LKW
Çap (Diameter): Ø 94,4
FM Grup No: 4001

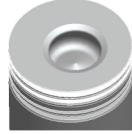
8140.23.2585/
8140.43.2585
4 Sil. Dizel 2800cc
76 Kw (103 PS) 18,5:1
SOFIM Turbo
Intercooled Motor
No: --> 2572279
35.10, 49.10,
M14 MINIBUS,
TURBO DAILY
1996 - 1999



Piston Ölçüleri
(Piston Dimensions)

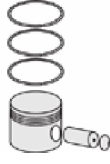
A : 58.750
B - : 19.400
BØ : 39.400
BX : 3.700
BY : 3.200
D : 96.750
E : 8.500

Pim: 32 x 78,1



Piston Özellikleri
(Piston Features)

Segman Taşıyıcı
(Ring Carrier)
Soğutma Kanallı
(Coolin Gallery)
Yağ Püskürtme Oyuğu
(Oil Jet Cut-out)
Gözarası Düz
(Flat Eye Gap)



Piston Parça No
(Piston Part No)

87-854700-02
87-70713-STD
87-854708-02
87-70713 0,60



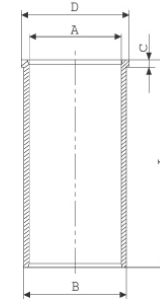
Segman Seti
(Ring Set)

06-854700-00-STD
06-854708-00 0,60 mm
3.000 CRP KV1
2.000 P F14
3.000 CRP STD



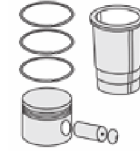
Silindir Gömleği
(Liner)

14-020070-00-D
B : 97.500
L : 167.000
D : 100.900
C : 5.000

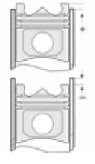


14-020071-00-D
B : 98.000
L : 167.000
D : 101.400
C : 5.000

Dış Çap 0,50mm Farklı
(Outside Diameter
0,50 mm Different)



Silindir Kit
(Assembly Set)



Piston - Blok Montaj
Yüksekliği
(Piston - Block
Assembly Height)

1,20 mm Conta ile
(With Gasket)
+0,40 / + 0,50
1,30 mm Conta ile
(With Gasket)
+0,51 / +0,60
1,40 mm Conta ile
(With Gasket)
+0,61 / +0,70
1,50 mm Conta ile
(With Gasket)
+0,71 / +0,80

