



CITROEN-FIAT - Ø 94,4

87-70753-STD

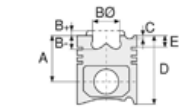


Motor Özellikleri
(Engine Specifications)

İmalatçı (Manufacturer):
CITROEN-FIAT
Çap (Diameter): Ø 94,4
FM Grup No: 1907

8140.63.3700

4 Sil. Dizel 2798cc
64 Kw(87 PS)
Sofim Motor
(Sophim Engine) /
Iveco, Peugeot Ve Fiat İle
Ortak Motor
(With Iveco, Peugeot And
Fiat Common Engine)
JUMPER 2.8 D



Piston Ölçüleri
(Piston Dimensions)

A : 55.000
B- : 1.700
D : 90.000
E : 7.500

Pim : 32 x 68



Piston Özellikleri
(Piston Features)

Segman Taşıyıcı
(Ring Carrier)
Sert Anotlama
(Hard Anodizing)
Yağ Püskürtme Oyuğu
(Oil Jet Cut-Out)
Göz Arası Konik
(Conical Eye Gap)



Piston Parça No
(Piston Part No)

87-123300-02
87-70753-STD
87-123306-02
87-70753-040



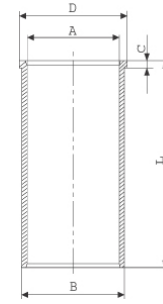
Segman Seti
(Ring Set)

06-123300-00-STD
06-123306-00-0,40mm
3.000 CKP KVI
2.000 P F14
2.500 CRP GOE



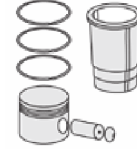
Silindir Gömleği
(Liner)

14-020070-00-D
B : 97.500
L : 167.000
D : 100.900
C : 5.000

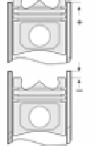


14-020071-00-D
B : 98.000
L : 167.000
D : 101.400
C : 5.000

Dış Çap 0,50mm Farklı
(Outside Diameter
0.50mm Different)



Silindir Kit
(Assembly Set)



Piston - Blok Montaj
Yüksekliği
(Piston - Block
Assembly Height)

+0,40/+0,50
1.20 mm Conta İle
(1.20 mm With Gasket)

+0,51/+0,60
1.30 mm Conta İle
(1.30 mm With Gasket)

+061/+0,70
1.40 mm Conta İle
(1.40 mm With Gasket)

