



IVECO LKW - Ø 137

87-70763-STDB



**Motor Özellikleri**  
(Engine Specifications)

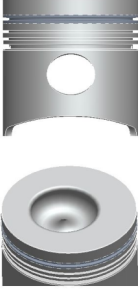
İmalatçı (Manufacturer):  
IVECO LKW  
Çap (Diameter): Ø 137  
FM Grup No: 4022

8210.02.00/221A,  
8210.12.0, 8215.02  
6 Sil. Dizel 13800cc  
162/191 Kw  
(220/260 PS) 16:1  
Direkt Püskürtme  
(Direct Spray)  
Motor no:003891-->  
170, 180, 190, 260,  
300, 370, 421, 619/697  
1972 - 1981

**Piston Ölçüleri**  
(Piston Dimensions)

A : 92.000  
B- : 32.400  
BØ : 67.000  
BX : 5.000  
D : 167.000  
E : 23.000

Pim: 48 x 117,5



**Piston Özellikleri**  
(Piston Features)

Segman Taşıyıcı  
(Ring Carrier)  
Gözarası Düz  
(Flat Eye Gap)

**Piston Parça No**  
(Piston Part No)

87-781300-12  
87-70763-STDB

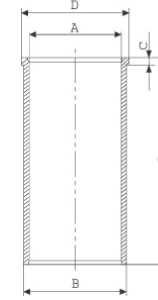
**Segman Seti**  
(Ring Set)

06-781300-20-STD  
4.000 CR KV1  
3.000 P STD  
3.000 P STD  
5.500 CRP STD

Goetze® LKZ-Ring®

**Silindir Gömleği**  
(Liner)

14-021560-10-DH  
B : 143.000  
L : 282.000  
D : 147.000  
C : 6.000



14-021561-10-DH  
B : 143.050  
L : 282.000  
D : 147.000  
C : 6.000

Dış Çap 0,05 MM  
Farklı (Outside  
Diameter  
0,05 mm Different)

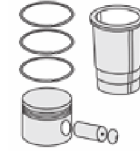
14-021562-10-DH  
B : 143.250  
L : 282.000  
D : 147.000  
C : 6.000

Dış Çap 0,25 MM  
Farklı (Outside  
Diameter  
0,25 mm Different)

14-021563-10-DH  
B : 143.500  
L : 282.000  
D : 147.000  
C : 6.000

Dış Çap 0,50 MM  
Farklı (Outside  
Diameter  
0,50 mm Different)

**Silindir Kit**  
(Assembly Set)



**Piston - Blok Montaj**  
Yüksekliği  
(Piston - Block  
Assembly Height)

-0,270 / +0,220

