



IVECO LKW - Ø 137

87-70786-STD A



Motor Özellikleri
(Engine Specifications)

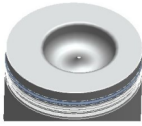
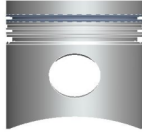
İmalatçı (Manufacturer):
IVECO LKW
Çap (Diameter): Ø 137
FM Grup No: 4024

8210.42.000
6 Sil. Dizel 13798cc
265 Kw (195PS) 15:1
Turbo Intercooled
190.36, 240.36,
330.36, 340.36
TURBO STAR
1988....

Piston Ölçüleri
(Piston Dimensions)

A : 92.000
B- : 33.000
BØ : 72.000
BX : 5.000
D : 157.000
E : 20.000

Pim: 50 x 117



Piston Özellikleri
(Piston Features)

Segman Taşıyıcı
(Ring Carrier)
Soğutma Kanallı
(Coolin Gallery)
Yağ Püskürtme Oyuğu
(Oil Jet Cut-out)
Gözarası Konik
(Conical Eye Gap)



Piston Parça No
(Piston Part No)

87-783000-12
87-70786-STD A

87-836500-42
87-70786-STDB

87-783000-82
87-70786-STDC



Segman Seti
(Ring Set)

06-783000-20-STD

4.000 CR KV1
3.000 CR IKA
5.500 CR STD

Goetze® LKZ-Ring®

06-836500-20-STD

4.000 CR KV1
3.000 CR IKA
5.500 CR STD

Goetze® LKZ-Ring®

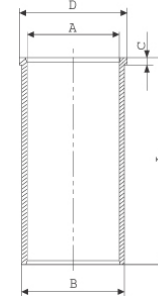
06-783000-40-STD

4.000 CR KV1
3.000 F14
5.500 CR GOE



Silindir Gömleği
(Liner)

14-021560-10-DH
B : 143.000
L : 282.000
D : 147.000
C : 6.000



14-021561-10-DH
B : 143.050
L : 282.000
D : 147.000
C : 6.000

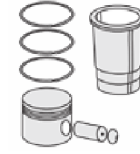
Dış Çap 0,05 MM
Farklı (Outside
Diameter 0,05 mm
Different)

14-021562-10-DH
B : 143.250
L : 282.000
D : 147.000
C : 6.000

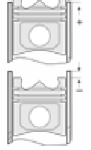
Dış Çap 0,25 MM
Farklı (Outside
Diameter 0,25 mm
Different)

14-021563-10-DH
B : 143.500
L : 282.000
D : 147.000
C : 6.000

Dış Çap 0,50 MM
Farklı (Outside
Diameter 0,50 mm
Different)



Silindir Kit
(Assembly Set)



Piston - Blok Montaj
Yüksekliği
(Piston - Block
Assembly Height)

- 0,27 / + 0,20

