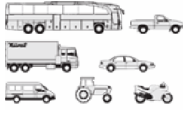




FORD LKW - Ø 107,21

87-70845-STD



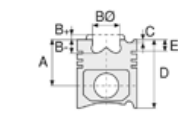
Motor Özellikleri
(Engine Specifications)

İmalatçı (Manufacturer):
FORD LKW
Çap (Diameter): Ø 107,21
FM Grup No: 3058

254 CID
4 Sil. Dizel 4160cc 66 Kw
(90 PS) 16:1

380 CID
6 Sil. Dizel 6221cc
89 Kw (121 PS) 16:1
D 0712, D 0812, D 0813,
D 0912, D 1013
1981....

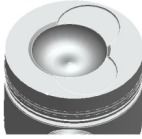
DOVER
6 Sil. Dizel 6224cc
96 Kw (128 PS) 16:1
DSMZ, KAMYON 2014,
KAMYON 2514,
OTOBUS 131.11.8



Piston Ölçüleri
(Piston Dimensions)

A : 71.250
B- : 23.300
BØ: 58.700
BX : 3.700
C1 : 2.300
D : 119.900
E : 25.000

Pim: 36,505 x 86,2



Piston Özellikleri
(Piston Features)

Segman Taşıyıcı
(Ring Carrier)
Çelik Plaka
(Steel Strut)
Gözarası Düz
(Flat Eye Gap)



Piston Parça No
(Piston Part No)

87-782900-02
87-70845-STD

87-782906-02
87-70845 015

87-782910-02
87-70845 035



Segman Seti
(Ring Set)

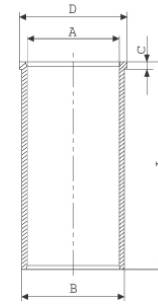
06-782900-10-STD
06-782906-10 0,015 "
06-782910-10 0,035 "

2.385 CR KV1
2.385 P STD
4.747 CR STD



Silindir Gömleği
(Liner)

14-025840-00-D
B : 112.000
L : 213.000
D : 113.000
C : 6.000

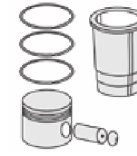


14-025841-00-D
B : 112.500
L : 213.000
D : 113.500
C : 6.000

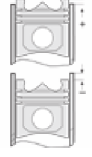
Dış Çap 0,50mm Farklı
(Outside Diameter
0,50 mm Different)

14-025842-00-D
B : 113.000
L : 213.000
D : 114.000
C : 6.000

Dış Çap 1,00mm Farklı
(Outside Diameter
1,00 mm Different)



Silindir Kit
(Assembly Set)



Piston - Blok Montaj
Yüksekliği
(Piston - Block
Assembly Height)

+ 0,152 / + 0,380

