

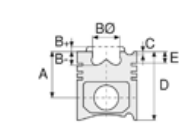


Motor Özellikleri
(Engine Specifications)

İmalatçı (Manufacturer):
FORD PKW
Çap (Diameter): 87,65
FM Grup No: 2922

HC

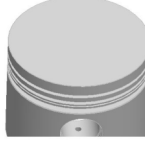
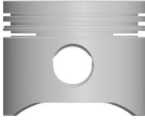
4 Sil. Benzinli 1576cc
53/53,5/64,5 Kw (68/70/
73/88 PS) 9,2:1
CAPRI 1600 II LC,
CONTINA 1600,
ESCORT 1600,
GRANDA 1600,
TAUNUS 1600
1970 - 1981



Piston Ölçüleri
(Piston Dimensions)

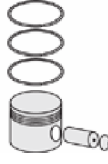
A : 41.100
D : 73.100
E : 7.800

Pim: 24 x 72,8



Piston Özellikleri
(Piston Features)

Çelik Plaka
(Steel Strut)
Biyel Koluna Sıkı Geçme
(Close-fit to Connecting
Rod)
Göz arası düz
(Flat Eye Gap)



Piston Parça No
(Piston Part No)

87-205800-22
87-70854-STD

87-205807-22
87-70854 0,020

87-205811-22
87-70854 0,040



Segman Seti
(Ring Set)

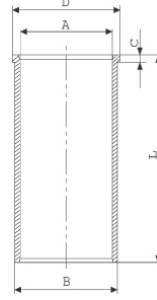
06-205800-20-STD
06-205807-20 0,020"
06-205811-20 0,040"

2.000 CKP KVI
2.500 P STD
4.000 CRP STD



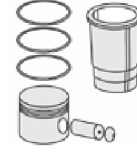
Silindir Gömleği
(Liner)

14-024500-00-D
B : 91.920
L : 125.000
D : 93.000
C : 5.500

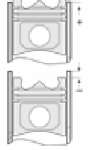


14-024501-00-D
B : 92.920
L : 125.000
D : 94.000
C : 5.500

Dış Çap 1,00mm Farklı
(Outer Diameter
1,00mm Different)



Silindir Kit
(Assembly Set)



Piston - Blok Montaj
Yüksekliği
(Piston - Block
Assembly Height)

-1,23 / -1,70

