



FORD PKW - Ø 90,8

87-70856-STDB



Motor Özellikleri
(Engine Specifications)

İmalatçı (Manufacturer):
FORD PKW
Çap (Diameter): 90,8
FM Grup No: 2934

HC

4 Sil. Benzinli 1994cc
72/81 Kw (98/110 PS) 9,2:1
CAPRI, CONSUL,
CORTINA, ESCORT RS,
GRANADA, TAUNUS
1970 - 1982

HC

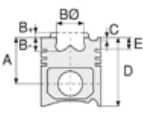
4 Sil. Benzinli 1994cc
73,5 Kw (100 PS) 9,2:1
Katalizör (Catalyst)
SIERRA
1986 - 1993

HC

4 Sil. Benzinli 1994cc
77 Kw (103 PS) 9,2:1
SIERRA
1982 - 1993

HC

4 Sil. Benzinli 1994cc
84,5 Kw (115 PS) 9,2:1
Enjeksiyonlu (With
Injections)
SCORPIO, SIERRA
1983 - 1993



Piston Ölçüleri
(Piston Dimensions)

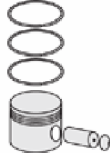
A : 41.550
D : 79.550
E : 7.800

Pim: 24 x 72,8



Piston Özellikleri
(Piston Features)

Çelik Plaka
(Steel Strut)
Biyel Koluna Sıkı Geçme
(Close-fit to Connecting
Rod)
Gözarası Düz
(Flat Eye Gap)



Piston Parça No
(Piston Part No)

87-839400-32
87-70856-STDB

87-839407-32
87-70856 0,020B

87-839411-32
87-70856 0,040B



Segman Seti
(Ring Set)

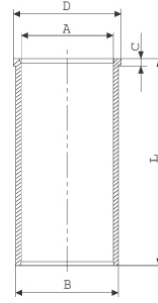
06-839400-90-STD
06-839407-90 0,020"
06-839411-90 0,040"

2.000 CKP KV1
2.500 P STD
4.000 CRP STD



Silindir Gömleği
(Liner)

14-025170-00-D
B : 93.960
L : 138.000
D : 94.930
C : 5.700

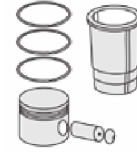


14-025171-00-D
B : 94.460
L : 138.000
D : 95.430
C : 5.700

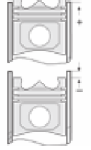
Dış Çap 0,50mm Farklı
(Outer Diameter
0,50mm Different)

14-025172-00-D
B : 94.960
L : 138.000
D : 95.930
C : 5.700

Dış Çap 1,00mm Farklı
(Outer Diameter
1,00mm Different)



Silindir Kit
(Assembly Set)



Piston - Blok Montaj
Yüksekliği
(Piston - Block
Assembly Height)

-0,18 / -0,64

