



Motor Özellikleri
(Engine Specifications)

İmalatçı (Manufacturer):
FORD TRK
Çap (Diameter): Ø 106,68
FM Grup No: 3155

6Y, 7A, 2504E, 2508E

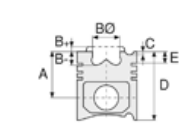
3 Sil. Dizel 2868cc
32/34,5 Kw (44/47 PS)
16,3:1/16,5:1

TRAKTÖR SUPER
DEXTA 3000,
TRAKTÖR SUPER
DEXTA 333, TRAKTÖR
SUPER DEXTA 353,
TRAKTÖR SUPER
DEXTA 3600
1965....

6Y, 7A

4 Sil. Dizel 3818cc
49,5/55 Kw (67/75 PS)
16,3:1/16,5:1

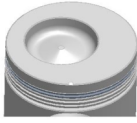
SÜPER MAJOR 5000,
SÜPER MAJOR 5550,
SÜPER MAJOR 5600
1965....



Piston Ölçüleri
(Piston Dimensions)

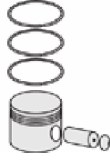
A : 70.150
B- : 17.900
BØ : 59.450
BX : 8.200
BY : 2.700
D : 129.000
E : 19.400

Pim: 38,1 x 89,15



Piston Özellikleri
(Piston Features)

Segman Taşıyıcı
(Ring Carrier)
Gözarası Düz
(Flat Eye Gap)



Piston Parça No
(Piston Part No)

87-208100-02
87-70869-STD

87-208107-02
87-70869 0,020

87-208109-02
87-70869 0,030

87-208111-02
87-70869 0,040



Segman Seti
(Ring Set)

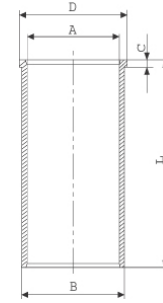
06-208100-20-STD
06-208107-20 0,020 "
06-208109-20 0,030 "
06-208111-20 0,040 "

2.385 CR KVI
2.385 CR STD
2.385 STD
4.747 CR STD



Silindir Gömleği
(Liner)

14-020730-00-D
B : 110.800
L : 209.600
D : 111.800
C : 5.000

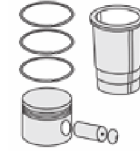


14-020731-10-D
B : 111.300
L : 209.600
D : 112.300
C : 5500.000

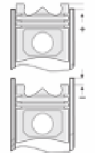
Dış Çap 0,5 mm Farklı
(Outside Diameter
0,50 mm different)

14-020732-10-D
B : 111.800
L : 209.600
D : 112.800
C : 6.000

Dış Çap 1,0 mm Farklı
(Outside Diameter
1,00 mm different)



Silindir Kit
(Assembly Set)



Piston - Blok Montaj
Yüksekliği
(Piston - Block
Assembly Height)

- 0,05 / - 0,15

