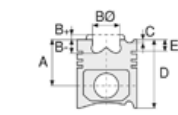


Motor Özellikleri
(Engine Specifications)

İmalatçı (Manufacturer):
FORD TRK
Çap (Diameter): Ø 106,68
FM Grup No: 3156

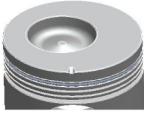
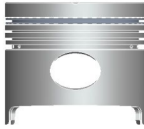
2502 E
3 Sil. Dizel 2589cc
25/27/29,5 Kw
(34/37/40 PS) 17:1
TRAKTOR DEXTA
2000, TRAKTOR
DEXTA 2000A,
TRAKTOR DEXTA
2000DL, TRAKTOR
DEXTA 2000S
1965....



Piston Ölçüleri
(Piston Dimensions)

A : 75.230
B- : 19.300
BØ : 53.200
BX : 8.200
BY : 2.700
D : 134.080
E : 19.400

Pim: 38,1 x 89,15



Piston Özellikleri
(Piston Features)

Segman Taşıyıcı
(Ring Carrier)
Gözarası Düz
(Flat Eye Gap)



Piston Parça No
(Piston Part No)

87-208100-22
87-70870-STD

87-208107-22
87-70870 0,020

87-208109-22
87-70870 0,030

87-208111-22
87-70870 0,040



Segman Seti
(Ring Set)

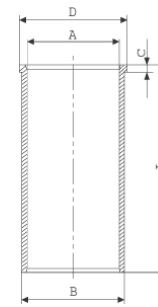
06-208100-20-STD
06-208107-20 0,020 "
06-208109-20 0,030 "
06-208111-20 0,040 "

2.385 CR KV1
2.385 CR STD
2.385 STD
4.747 CR STD



Silindir Gömleği
(Liner)

14-020730-00-D
B : 110.800
L : 209.600
D : 111.800
C : 5.000

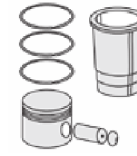


14-020731-10-D
B : 111.300
L : 209.600
D : 112.300
C : 5500.000

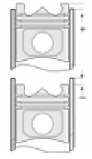
Dış çap 0,5 mm farklı
(Outside Diameter
0,50 mm Different)

14-020732-10-D
B : 111.800
L : 209.600
D : 112.800
C : 6.000

Dış çap 1,0 mm farklı
(Outside Diameter
1,00 mm Different)



Silindir Kit
(Assembly Set)



Piston - Blok Montaj
Yüksekliği
(Piston - Block
Assembly Height)

- 0,05 / - 0,15

