



HATZ - Ø 108

87-71016-STD



**Motor Özellikleri**  
(Engine Specifications)

İmalatçı (Manufacturer):  
HATZ  
Çap (Diameter): Ø 108  
FM Grup No: 3305

**E108**

1 Sil. Dizel 1010cc 13/14,5  
Kw (18/20 PS) 17, 5:1  
Pancar Motor Su Pompası  
(Beet Engine Water Pump)  
1970...

**Z108**

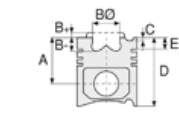
2 Sil. Dizel 2010cc 26,5/29,5  
Kw (36/40 PS) 17, 5:1  
1970...

**D108**

3 Sil. Dizel 3020cc 34,5/44  
Kw (54/60 PS) 17, 5:1  
1970...

**V108**

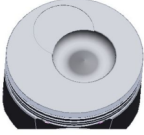
4 Sil. Dizel 4030cc 53/59  
Kw (72/80 PS) 17, 5:1  
1970...



**Piston Ölçüleri**  
(Piston Dimensions)

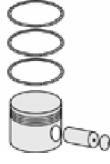
A : 71.000  
B - : 20.000  
BØ : 60.000  
BX : 6.000  
BY : 3.000  
C1 : 0.900  
D : 109.000  
E : 16.000

Pim : 35 x 85



**Piston Özellikleri**  
(Piston Features)

Çelik Plaka  
(Steel Strut)  
Gözarası Düz  
(Flat Eye Gap)



**Piston Parça No**  
(Piston Part No)

87-076460-02  
87-71016-STD

87-076407-02  
87-71016-050

87-076411-02  
87-71016-100

87-804000-02  
87-71016-STD B

87-804007-02  
87-71716-050 B

87-804011-02  
87-71716-100 B



**Segman Seti**  
(Ring Set)

06-076460-00-STD

3.000 CRP STD  
3.000 P STD  
3.000 P STD  
5.000 CRP STD

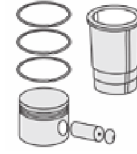
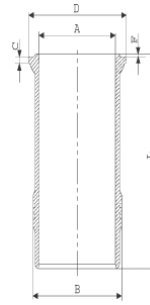
06-804000-00-STD  
06-804007-00-0,50 mm  
06-804011-00-1,00 mm

3.000 CRP STD  
3.000 P STD  
3.000 P STD  
5.000 CRP STD

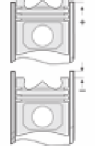


**Silindir Gömleği**  
(Liner)

14-265190-01-WH  
B : 121.000  
L : 207.400  
D : 127.700  
C : 7.100  
F : 1.400



**Silindir Kit**  
(Assembly Set)



**Piston - Blok Montaj**  
Yüksekliği  
(Piston - Block  
Assembly Height)

+1,10 / +1,30

