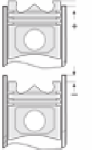
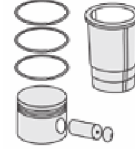
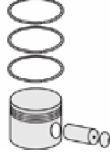
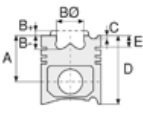




ISUZU - Ø 88

87-71230-STD



Motor Özellikleri
(Engine Specifications)

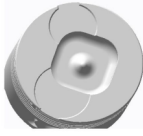
İmalatçı (Manufacturer):
ISUZU
Çap (Diameter): Ø 88
FM Grup No: 3911

4 Sil. Dizel THERMOKING
SOĞUTUCU ÜNİTELERİ
(Cooling Units)
1982 - 1996

Piston Ölçüleri
(Piston Dimensions)

A : 47.750
B- : 14.200
BX : 3.500
BY : 0.500
C1 : 0.650
C2 : 0.800
D : 87.900
E : 10.750

Pim : 31 x 71



Piston Özellikleri
(Piston Features)

Çelik Plaka
(Steel Strut)
Gözarası Düz
(Flat Eye Gap)

Piston Parça No
(Piston Part No)

87-855400-02
87-71230-STD
87-855407-02
87-71230-050
87-855411-02
87-71230-100

Segman Seti
(Ring Set)

06-855400-00-STD
06-855407-00-0,50 mm
06-855411-00-1,00 mm
2.000 CRP F14
2.000 P STD
2.000 P STD
4.000 CRP STD

Silindir Gömleği
(Liner)

Silindir Kit
(Assembly Set)

Piston - Blok Montaj
Yüksekliği
(Piston - Block
Assembly Height)

