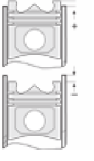
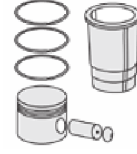
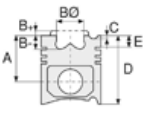




ISUZU - Ø 87

87-71231-STD



**Motor Özellikleri**  
(Engine Specifications)

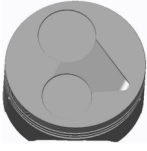
İmalatçı (Manufacturer):  
ISUZU  
Çap (Diameter): Ø 87  
FM Grup No: 3906

4 Sil. Dizel CARRIER

**Piston Ölçüleri**  
(Piston Dimensions)

A : 43.450  
B- : 1.500  
C1 : 1.000  
D : 80.000  
E : 12.450

Pim : 25 x 64



**Piston Özellikleri**  
(Piston Features)

Çelik Plaka  
(Steel Strut)  
Gözarası Düz  
(Flat Eye Gap)

**Piston Parça No**  
(Piston Part No)

87-855000-02  
87-71231-STD  
87-855007-02  
87-71231-050

**Segman Seti**  
(Ring Set)

06-855000-00-STD  
06-855007-00-0,50 mm  
2.500 CRP IKA  
1.970 CRP STD  
5.000 CRP STD

**Silindir Gömleği**  
(Liner)

**Silindir Kit**  
(Assembly Set)

**Piston - Blok Montaj**  
Yüksekliği  
(Piston - Block  
Assembly Height)

