



ISUZU - Ø 93

87-71234-STD



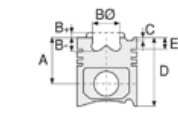
Motor Özellikleri
(Engine Specifications)

İmalatçı (Manufacturer):
ISUZU

Çap (Diameter): Ø 93
FM Grup No: 3916

4JA1-TC SERİSİ
COM. RAİL

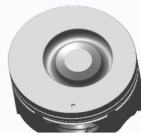
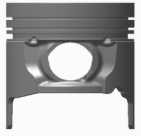
4 Sil. Dizel 2499cc
74kW (100 PS) 18,5:1
D-MAX PICKUP 4X2 4X4
2004...



Piston Ölçüleri
(Piston Dimensions)

A : 47.810
B- : 15.800
BØ : 49.500
BX : 4.000
BY : 1.000
D : 102.850
E : 12.000

Pim: 31 x 76



Piston Özellikleri
(Piston Features)

Segman Taşıyıcı
(Ring Carrier)
Soğutma Kanallı
(Coolin Gallery)
Yağ Püskürtme Oyuğu
(Oil Jet Cut-out)
Gözarası Konik
(Conical Eye Gap)



Piston Parça No
(Piston Part No)

87-853300-02
87-71234-STD



Segman Seti
(Ring Set)

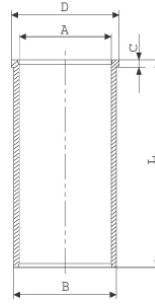
06-853300-00 STD

2.000 P STD
2.000 P STD
4.000 NT ST

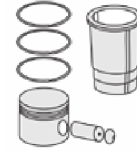


Silindir Gömleği
(Liner)

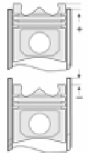
14-021450-10-DH
B : 95.040
L : 156.000
D : 101.000
C : 0.820



İçi Krom Kaplı,
Çelik Gömlek
(Inside Chrome Coated,
Steel Shirt)



Silindir Kit
(Assembly Set)



Piston - Blok Montaj
Yüksekliği
(Piston - Block
Assembly Height)

