



ISUZU - Ø 110

87-71244-STD



Motor Özellikleri
(Engine Specifications)

İmalatçı (Manufacturer):
ISUZU

Çap (Diameter): Ø 110
FM Grup No: 3920

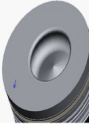
4HE1 EURO 2

4 Sil. Dizel 4751cc
140-175 HP
NPR NQR, NPS 4X4, NQR
1998 - 2007

Piston Ölçüleri
(Piston Dimensions)

A : 66.200
B- : 22.600
BØ : 49.600
BX : 5.000
BY : 1.000
D : 110.000
E : 13.000

Pim: 40 x 87



Piston Özellikleri
(Piston Features)

Segman Taşıyıcı
(Ring Carrier)
Soğutma Kanallı
(Coolin Gallery)
Gözarası Konik
(Conical Eye Gap)

Piston Parça No
(Piston Part No)

87-853800-02
87-71244-STD

Segman Seti
(Ring Set)

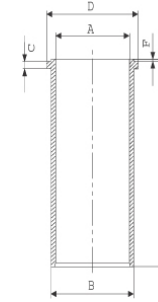
06-853800-00-STD

3.000 CR ST
2.000 NT ST
1.200 NT ST
3.000 NT ST

Silindir Gömleği
(Liner)

14-040350-00-D

B : 115.050
L : 210.000
D : 120.680
C : 5.670



14-040351-00-D

B : 115.300
L : 210.000
D : 120.680
C : 5.670

Dış Çap 0.25 mm Farklı
(Outside Diameter
0.25 mm Different)

14-040460-00-DH

B : 115.000
L : 210.000
D : 120.680
C : 5.670
F : 0.400

Dış Yüzeyi
Fosfat Kaplı
(Outer Surface
Phosphate Coated)

14-040461-00-DH

B : 115.250
L : 210.000
D : 120.680
C : 5.670
F : 0.400

Dış çap 0,25 mm Farklı
(Outside Diameter
0.25 mm Different)

Piston - Blok Montaj
Yüksekliği
(Piston - Block
Assembly Height)

