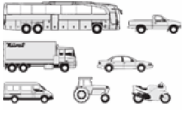




JOHN DEERE - Ø 106,5

87-71427-STDB



Motor Özellikleri
(Engine Specifications)

İmalatçı (Manufacturer):
John Deere
Çap (Diameter): 106,5
FM Grup No: 4203

4219 DL O3/O9

4 Sil. Dizel 3588cc 50/53
Kw (68/72 PS)
2030, 2035, 2440, 3030,
3130, 935 BICERDOVER
(Combine Harvester),
WHEEL LOADER JD 410
1968....

3239 DL O1

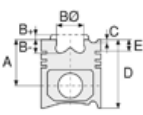
3 Sil. Dizel 2938cc 41 Kw
(56 PS) 16,2:1
3030, 3040, 3050, 3130,
3140, 3350, 3640
1973....

4239 DL O1

4 Sil. Dizel 3918cc 55 Kw
(75 PS) 16,2:1
1040, 1140, 1350, 1447,
1550, 1630, 1640, 1745,
1750, 1840, 1845, 1850
1972....

6359 DL O1

6 Sil. Dizel 5876cc 82,5
Kw (112 PS) 16,2:1
1040, 1140, 1640, 1840,
2030, 2040, 2130, 3040,
3140
1973....



Piston Ölçüleri
(Piston Dimensions)

A : 66.600
B- : 18.700
BØ : 58.400
BX : 3.500
D : 112.000
E : 12.900

Pim: 34,938 x 84



Piston Özellikleri
(Piston Features)

Segman Taşıyıcı
(Ring Carrier)
Gözarası Düz
(Flat Eye Gap)



Piston Parça No
(Piston Part No)

87-181100-12
87-71427-STDB



Segman Seti
(Ring Set)

O6-181100-90-STD

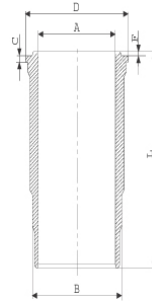
3.150  CKP KV1
2.385  P STD
3.465  CRP STD



Silindir Gömleği
(Liner)

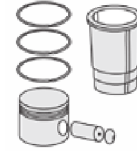
14-450710-00-WH

B : 115.697
L : 196.815
D : 126.000
C : 6.045
F : 0.815



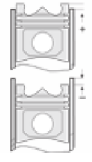
O-RING BİLGİ (O-Ring Information)

24-35027-90/O
1x 117*3,50 FPM
1x 117,07*3,53 MVQ
1x 99*2,3*3,8 NBR



Silindir Kit
(Assembly Set)

89-181100-12-STD
8971427-STDB



Piston - Blok Montaj
Yüksekliği
(Piston - Block
Assembly Height)

+ 0,10 / + 0,30

