

Motor Özellikleri
(Engine Specifications)

İmalatçı (Manufacturer):
John Deere
Çap (Diameter): 106,5
FM Grup No: 4206

3239 DL O1

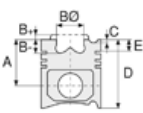
3 Sil. Dizel 2938cc 41 Kw
(56 PS) 16,2:1
3030, 3040, 3050, 3140,
3350, 3640

4239 DL O1

4 Sil. Dizel 3918cc 55 Kw
(75 PS) 16,2:1
1040, 1140, 1350, 1447,
1550, 1630, 1640, 1750,
1754, 1840, 1845, 1850,
1950, 2040, 2130, 2140,
2250, 2450, 2650, 2850,
4050, 840, 940

6359 DLO 1 / DL / O1 / O2

6 Sil. Dizel 5876cc 82,5
Kw (112 PS) 16,2:1
1040, 1140, 1350, 1447,
1550, 1630, 1640, 1750,
1754, 1840, 1845, 1850,
1950, 2030, 2040, 2130,
2140, 2250, 2450, 2650,
2850, 3040, 3140
1973....



Piston Ölçüleri
(Piston Dimensions)

A : 66.300
B- : 18.750
BØ : 58.400
BX : 3.500
D : 112.000
E : 4.000

Pim: 34,938 x 84



Piston Özellikleri
(Piston Features)

Segman Taşıyıcı
(Ring Carrier)
Gözarası Düz
(Flat Eye Gap)



Piston Parça No
(Piston Part No)

87-181100-92
87-71431-STD A

87-857200-82
87-71431-STD B



Segman Seti
(Ring Set)

06-181100-90-STD

3.150 CKP KV1
2.385 P STD
3.465 CRP STD

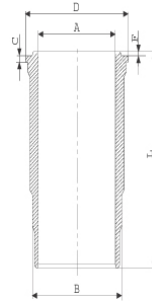
06-857200-00-STD

3.150 CKS KV4
2.385 P IKA
3.465 CR GOE

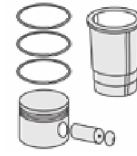


Silindir Gömleği
(Liner)

14-450710-00-WH
B : 115.697
L : 196.815
D : 126.000
C : 6.045
F : 0.815

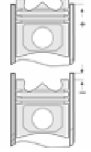


O-RING BİLGİ (O-Ring
Information)
24-35027-90/O
1x 117*3,50 FPM
1x 117,07*3,53 MVQ
1x 99*2,3*3,8 NBR



Silindir Kit
(Assembly Set)

89-181100-92-STD
89-71431-STD A



Piston - Blok Montaj
Yüksekliği
(Piston - Block
Assembly Height)

+ 0,10 / + 0,30

