

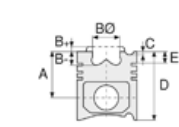


Motor Özellikleri
(Engine Specifications)

İmalatçı (Manufacturer):
John Deere
Çap (Diameter): 106,5
FM Grup No: 4225

4045 T, 5276T

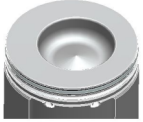
4 Sil. Dizel
4 VE 6 SİLİNDİR (Cylinder)
340D, 344D, 448D, 6100,
6200, 6300, 6500, 6510,
6800, 6900, SE6400
1998....



Piston Ölçüleri
(Piston Dimensions)

A : 71.620
B- : 22.000
BØ : 60.200
BX : 3.500
D : 120.000
E : 4.000

Pim: 41,275 x 84,3



Piston Özellikleri
(Piston Features)

Segman Taşıyıcı
(Ring Carrier)
Gözarası Düz
(Flat Eye Gap)



Piston Parça No
(Piston Part No)

87-181100-62
87-71432-STD

87-857200-42
87-71432-STD A



Segman Seti
(Ring Set)

06-181100-90-STD

3.150 CKP KV1
2.385 P STD
3.465 CRP STD

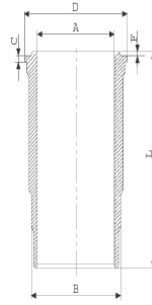
06-857200-00-STD

3.150 CKS KV4
2.385 P IKA
3.465 CR GOE



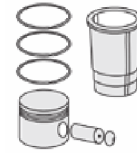
Silindir Gömleği
(Liner)

14-450660-00-WH
B : 120.000
L : 219.000
D : 125.900
C : 6.050
F : 0.800



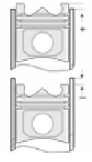
O-RING BİLGİ (O-Ring Information)

24-35027-90/0
1x 117*3,50 FPM
1x 117,07*3,53 MVQ
1x 99*2,3*3,8 NBR



Silindir Kit
(Assembly Set)

89-181100-62-STD
89-71432-STD



Piston - Blok Montaj
Yüksekliği
(Piston - Block
Assembly Height)

+0,07 /+0,25

