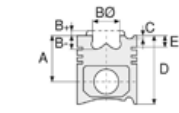




**Motor Özellikleri**  
(Engine Specifications)

İmalatçı (Manufacturer):  
HYUNDAI-MITSUBISHI  
Çap (Diameter): Ø 104  
FM Grup No: 6005

**4 D 34-1 ATA EUROII**  
4 Sil. Dizel 3908cc 136 PS  
659 CANTER, PRESTIJ TDI



**Piston Ölçüleri**  
(Piston Dimensions)

A : 62.200  
B - : 23.000  
B0 : 49.000  
BX : 6.800  
BY : 1.800  
D : 112.200  
E : 10.600

Pim : 36 x 88



**Piston Özellikleri**  
(Piston Features)

Segman Taşıyıcı  
(Ring Carrier)  
Çelik Plaka  
(Steel Strut)  
Sert Anotlama  
(Hard Anodizing)  
Soğutma Kanallı  
(Cooling Gallery)  
Yağ Püskürtme Oyuğu  
(Oil Jet Cut-Out)  
Gözarası Konik  
(Conical Eye Gap)



**Piston Parça No**  
(Piston Part No)

87-288300-02  
87-71592-STD  
87-288307-02  
87-71592-050

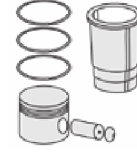


**Segman Seti**  
(Ring Set)

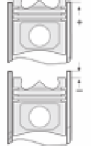
06-288300-00-STD  
06-288307-00-0,50 mm  
3.000 CRP KV1  
2.000 CRP IKA  
4.000 CRP STD



**Silindir Gömleği**  
(Liner)



**Silindir Kit**  
(Assembly Set)



**Piston - Blok Montaj**  
Yüksekliği  
(Piston - Block  
Assembly Height)

+0,60 / +0,70

