



HATZ - Ø 90

87-71712-STDA



Motor Özellikleri
(Engine Specifications)

İmalatçı (Manufacturer):
HATZ
Çap (Diameter): Ø 90
FM Grup No: 6801

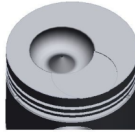
PANCAR MOTOR 5
(Beet Engine 5)

1 Sil. Dizel 15 PS
Hava Soğutmalı (Air Cooled)
Pancar Motor Su Pompası
(Beet Engine Water Pump),
SU MOTORU (Water Engine)

Piston Ölçüleri
(Piston Dimensions)

A : 53.500
B - : 20.800
B0 : 43.800
BX : 7.000
C1 : 0.850
D : 103.500
E : 12.500

Pim : 30 x 78



Piston Özellikleri
(Piston Features)

Çelik Plaka
(Steel Strut)
Gözarası Düz
(Flat Eye Gap)

Piston Parça No
(Piston Part No)

87-228900-2
87-71712-STDA

87-228907-22
87-71712-050A

87-228911-22
87-71712-100A

87-076360-22
87-71712-STDB

87-076367-22
87-71712-050B

87-076371-22
87-71712-100B

Segman Seti
(Ring Set)

06-228900-00-STD
06-228907-00-0,50 mm
06-228911-00-1,00 mm

3.000 CRP STD
3.000 P STD
5.000 CRP STD

06-076360-00-STD
06-076367-00-0,50 mm
06-076371-00-1,00 mm
06-076374-00-1,50 mm

3.000 CRP STD
3.000 P STD
5.000 P STD

Silindir Gömleği
(Liner)

Silindir Kit
(Assembly Set)

Piston - Blok Montaj
Yüksekliği
(Piston - Block
Assembly Height)

