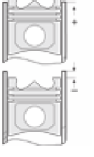
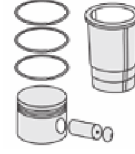




HATZ - Ø 102

87-71714-STDA



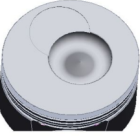
Motor Özellikleri
(Engine Specifications)

İmalatçı (Manufacturer):
HATZ
Çap (Diameter): Ø 102
FM Grup No: 3309

PM18M
1 Sil. Dizel 858cc 14,4
Kw (19,6 Ps) 18, 8:1

Piston Ölçüleri
(Piston Dimensions)

A : 58.500
B- : 20.000
BØ : 46.750
BX : 7.000
C1 : 0.850
D : 108.500
E : 12.500
Pim : 30 x 85



Piston Özellikleri
(Piston Features)

Çelik Plaka
(Steel Strut)
Gözarası Düz
(Flat Eye Gap)

Piston Parça No
(Piston Part No)

87-174600-22
87-71714-STDA
87-174607-22
87-71714-050A
87-174611-22
87-71714-100A

Segman Seti
(Ring Set)

06-174600-80-STD
06-174607-80-0,50 mm
06-174611-80-1,00 mm
3.000 CK KV1
2.500 STD
2.500 STD
5.000 CR STD
Goetze® LKZ-Ring®

Silindir Gömleği
(Liner)

Silindir Kit
(Assembly Set)

Piston - Blok Montaj
Yüksekliği
(Piston - Block
Assembly Height)

