



IVECO LKW - Ø 125

87-72859-STD

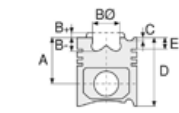


Motor Özellikleri
(Engine Specifications)

İmalatçı (Manufacturer):
IVECO LKW
Çap (Diameter): Ø 125
FM Grup No: 4073

CURSOR 10 EURO 5

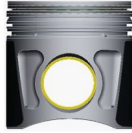
6 Sil. Dizel 10308cc
316 KW-450 HP
F3 AE 3681 A EURO5 /
F3 AE 3681 B EURO5 /
F3 AE 3681 D EURO5
EUROTRAKKER
2009....



Piston Ölçüleri
(Piston Dimensions)

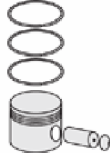
A : 85.500
B - : 21.200
BØ : 88.000
D : 133.500
E : 7.500

Pim: 50 x 101



Piston Özellikleri
(Piston Features)

Segman Taşıyıcı
(Ring Carrier)
Soğutma Kanallı
(Coolin Gallery)
Yağ Püskürtme Oyuğu
(Oil Jet Cut-out)
Burçlu Piston
(Bushing Piston)
Gözarası Konik
(Conical Eye Gap)



Piston Parça No
(Piston Part No)

87-829000-02
87-72859-STD



Segman Seti
(Ring Set)

06-829000-20-STD

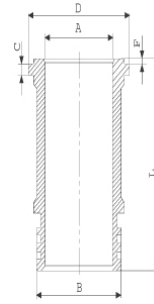
2.500 CK KV4
3.000 P F14
4.000 CR GOE13

Goetze® LKZ-Ring®



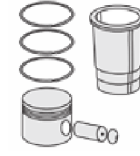
Silindir Gömleği
(Liner)

14-260040-00-WH
B : 140.000
L : 240.200
D : 150.600
C : 9.960
F : 1.200



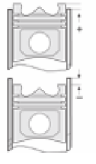
O-RING Bilgi /
Dış Yüzeyi Fosfat
Kaplı (O RING
Information / Outer
Surface Phosphate
Coated)

24-35047-40/O
1x 132,94*3,53 FPM
2x 132,94*3,53 FPM
Şim: 1x144*151*0,15



Silindir Kit
(Assembly Set)

89-829000-02-STD
89-72859-STD



Piston - Blok Montaj
Yüksekliği
(Piston - Block
Assembly Height)

+0,28 / +0,52

