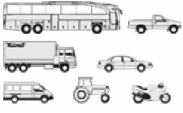




IVECO LKW - Ø 125

87-72879-STD



Motor Özellikleri
(Engine Specifications)

İmalatçı (Manufacturer):
IVECO LKW
Çap (Diameter): Ø 125
FM Grup No: 4029

F3A CURSOR 10
TCA EURO 3

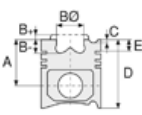
6 Sil. Dizel 10303cc
287-316 KW
(390-430 PS) 17:1
190 E43, 260 E39,
260 E43, 440 E39,
440 E43, EUROTRAKER
190 E39
2000....

F3AE 0681 DA
CURSOR 10 EURO 3

6 Sil. Dizel 10303cc
287-316 KW
(390-430 PS) 17:01
190 E43, 260 E39,
260 E43, 440 E39,
440 E43, EUROTRAKER
190 E39
2000....

F3AE 0681 EA
CURSOR 10 EURO 3

6 Sil. Dizel 10303cc
287-316 Kw
(390-430 PS) 17:1
190 E43, 260 E39,
260 E43, 440 E39,
440 E43,
EUROTRAKER 190 E39
2000....



Piston Ölçüleri
(Piston Dimensions)

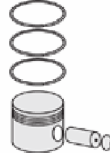
A : 85.500
B - : 21.200
BØ : 88.000
D : 133.500
E : 9.250

Pim: 50 x 101



Piston Özellikleri
(Piston Features)

Segman Taşıyıcı
(Ring Carrier)
Soğutma Kanallı
(Coolin Gallery)
Yağ Püskürtme Oyuğu
(Oil Jet Cut-out)
Gözarası Konik
(Conical Eye Gap)



Piston Parça No
(Piston Part No)

87-121900-22
87-72879-STD

87-121900-02
87-72879 STD



Segman Seti
(Ring Set)

06-121900-40-STD
3.500 CK KV1
3.000 NT F14
4.000 CR GOE

Goetze® LKZ-Ring®

06-121900-40-STD

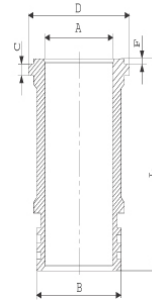
3.500 CK KV1
3.000 NT F14
4.000 CR GOE

Goetze® LKZ-Ring®

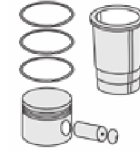


Silindir Gömleği
(Liner)

14-260040-00-WH
B : 140.000
L : 240.200
D : 150.600
C : 9.960
F : 1.200

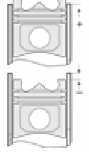


O-RING Bilgi /
Dış Yüzeyi Fosfat
Kaplı
(O-RING Information /
Outer Surface
Phosphate Coated)
24-35047-40/O
1x 132,94*3,53 FPM
2x 132,94*3,53 FPM
Şim: 1x144*151*0,15



Silindir Kit
(Assembly Set)

88-121900-02-STD
88-72879-STD



Piston - Blok Montaj
Yüksekliği
(Piston - Block
Assembly Height)

+0,28/ +0,52

