



Motor Özellikleri
(Engine Specifications)

İmalatçı (Manufacturer):
John Deere
Çap (Diameter): 106,5
FM Grup No: 4238

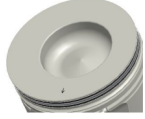
3029T
Dizel 2900cc
5303, 5403



Piston Ölçüleri
(Piston Dimensions)

A : 66.300
B- : 18.800
BØ : 58.300
BX : 3.500
D : 95.300
E : 4.200

Pim: 32 x 80



Piston Özellikleri
(Piston Features)

Segman Taşıyıcı
(Ring Carrier)
Gözarası Konik
(Conical Eye Gap)



Piston Parça No
(Piston Part No)

87-856900-02
87-73160-STDA



Segman Seti
(Ring Set)

06-856900-90-STD

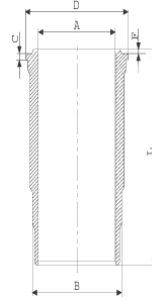
2.420  CK KV4
2.390  P STD
3.465  CRP STD



Silindir Gömleği
(Liner)

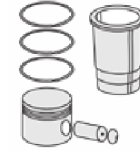
14-450710-00-WH

B : 115.697
L : 196.815
D : 126.000
C : 6.045
F : 0.815



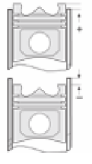
O-RING BİLGİ (O-Ring Information)

24-35027-90/0
1x 117*3,50 FPM
1x 117,07*3,53 MVQ
1x 99*2,3*3,8 NBR



Silindir Kit
(Assembly Set)

89-856900-02-STD
89-73160-STDA



Piston - Blok Montaj
Yüksekliği
(Piston - Block
Assembly Height)

