

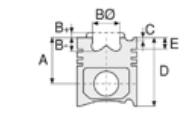


Motor Özellikleri
(Engine Specifications)

İmalatçı (Manufacturer):
HYUNDAI-KIA
Çap (Diameter): Ø 91
FM Grup No: 4610

2,5 CRDI

4 Sil. Dizel 2497cc 103
Kw(140 PS)
Hyundai İle Ortak Motor
(With Hyundai Common
Engine)
SORENTO
2002...



Piston Ölçüleri
(Piston Dimensions)

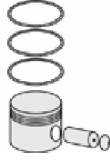
A : 54.250
B- : 15.000
BØ : 52.000
C1 : 0.300
D : 83.750
E : 9.000

Pim : 33 x 75



Piston Özellikleri
(Piston Features)

Segman Taşıyıcı
(Ring Carrier)
Soğutma Kanallı
(Cooling Gallery)
Yağ Püskürtme Oyuğu
(Oil Jet Cut-Out)
Gözarası Konik
(Conical Eye Gap)



Piston Parça No
(Piston Part No)

87-848507-03
87-73200-0501
0,20 mm Kısa (Short)

87-848500-02
87-73200-STD

87-848507-02
87-73200-050

87-848500-03
87-73200-STD1
0,20 mm Kısa (Short)



Segman Seti
(Ring Set)

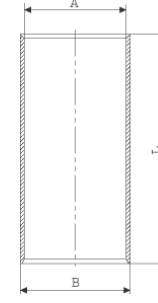
06-848500-00-STD
06-848507-00-0,50 mm

2.500 CKP KV4
2.000 CRP GOE
3.000 NT ST



Silindir Gömleği
(Liner)

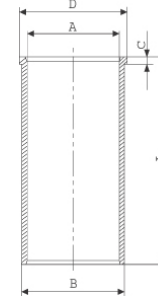
14-011150-00-D
B : 94.200
L : 170.000



14-011151-00-D
B : 94.700
L : 170.000

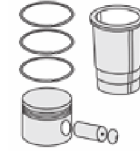
Dış Çap 0,50 mm Farklı
(Outside Diameter
0,50 mm Different)

14-022430-00-D
B : 94.200
L : 170.000
D : 95.500
C : 5.000

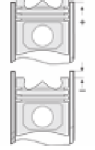


14-022431-00-D
B : 94.700
L : 170.000
D : 96.000
C : 5.500

Dış Çap 0,50 mm Farklı
(Outside Diameter
0,50 mm Different)



Silindir Kit
(Assembly Set)



Piston - Blok Montaj
Yüksekliği
(Piston - Block
Assembly Height)

+0,06 /+0,24

