



CUMMINS - Ø 102

87-73368-STD

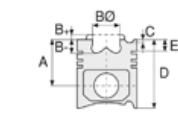


Motor Özellikleri
(Engine Specifications)

İmalatçı (Manufacturer):
Cummins
Çap (Diameter): 102
FM Grup No: 2116

B.160.10 EURO1

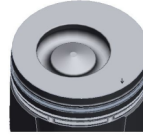
6 Sil. Dizel 5880cc
215/235 PS
Turbocharged
FATİH 180, PRO 518,
PRO 617
2002....



Piston Ölçüleri
(Piston Dimensions)

A : 71.620
B- : 20.700
BØ : 54.000
BX : 5.000
BY : 1.000
D : 105.400
E : 14.600

Pim: 40 x 83



Piston Özellikleri
(Piston Features)

Segman Taşıyıcı
(Ring Carrier)
Gözarası Konik
(Conical Eye Gap)



Piston Parça No
(Piston Part No)

87-155200-62
87-73368-STD
87-155207-62
87-73368-050



Segman Seti
(Ring Set)

06-155200-10-STD
06-155205-10 0,25 mm
06-155207-10 0,50 mm

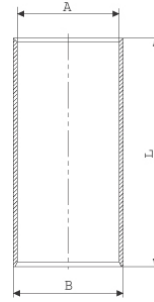
3.000 CRP KV1
2.350 P F14
4.000 CRP STD

Goetze® LKZ-Ring®



Silindir Gömleği
(Liner)

14-014530-00-D
B : 104.565
L : 200.000



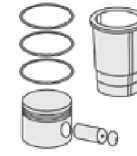
14-014531-00-D
B : 105.065
L : 200.000

Dış Çap 0,50mm Farklı
(Outer Diameter
0,50mm Different)

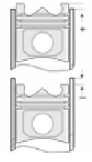
14-014532-00-D
B : 105.565
L : 200.000

Dış Çap 1,00mm Farklı
(Outer Diameter
1,00mm Different)

14-047310-00-D
B : 106.070
L : 204.800
D : 109.000
C : 4.050
F : 0.800



Silindir Kit
(Assembly Set)

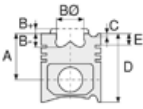


Piston - Blok Montaj
Yüksekliği
(Piston - Block
Assembly Height)

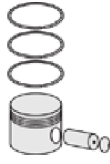




Motor Özellikleri
(Engine Specifications)



Piston Ölçüleri
(Piston Dimensions)



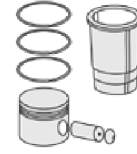
Piston Parça No
(Piston Part No)



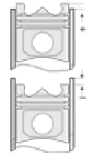
Segman Seti
(Ring Set)



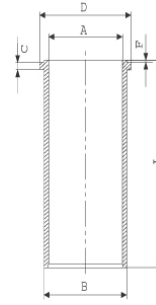
Silindir Gömleği
(Liner)



Silindir Kit
(Assembly Set)



Piston - Blok Montaj
Yüksekliği
(Piston - Block
Assembly Height)



14-047311-00-D
B : 106.570
L : 204.800
D : 109.500
C : 5.050
F : 0.800

Dış Çap 0,50mm Farklı
(Outer Diameter
0,50mm Different)

14-047312-00-D
B : 107.070
L : 204.800
D : 110.000
C : 5.050
F : 0.800

Dış Çap 1,00mm Farklı
(Outer Diameter
1,00mm Different)

14-047313-00-D
B : 107.570
L : 204.800
D : 110.500
C : 5.500
F : 0.800

Dış Çap 1,50mm Farklı
(Outer Diameter
1,50mm Different)

