



CUMMINS - Ø 102

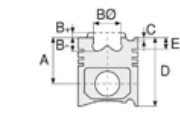
87-73373-STD



Motor Özellikleri
(Engine Specifications)

İmalatçı (Manufacturer):
Cummins
Çap (Diameter): 102
FM Grup No: 2126

ISF 3.8
4 Sil. Dizel 3759cc
123 KW-167 PS
Endüstriyel, İŞ MAKİNASI
(Industrial, Heavy
Machinery)



Piston Ölçüleri
(Piston Dimensions)

A : 73.900
B- : 18.000
BØ : 54.800
D : 108.900
E : 8.200

Pim: 40 x 82,7



Piston Özellikleri
(Piston Features)

Segman Taşıyıcı
(Ring Carrier)
Soğutma Kanallı
(Coolin Gallery)
Yağ Püskürtme Oyuğu
(Oil Jet Cut-out)
Gözarası Konik
(Conical Eye Gap)



Piston Parça No
(Piston Part No)

87-135200-42
87-73373-STD



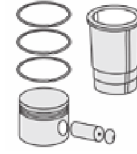
Segman Seti
(Ring Set)

06-135200-00-STD
06-135207-00 0,50 mm

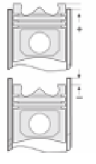
3.000  CKP KV1
2.350  P GOE
4.000  CR GOE



Silindir Gömleği
(Liner)



Silindir Kit
(Assembly Set)



Piston - Blok Montaj
Yüksekliği
(Piston - Block
Assembly Height)

