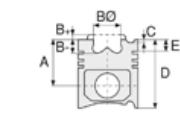




Motor Özellikleri
(Engine Specifications)

İmalatçı (Manufacturer):
Cummins
Çap (Diameter): 114
FM Grup No: 2115

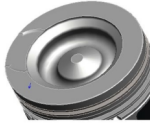
C.260.21 EURO2
6 Sil. Dizel 8268cc
260 SERİSİ OTOBÜSLER
- 2002



Piston Ölçüleri
(Piston Dimensions)

A : 74.300
B - : 22.000
BØ : 80.300
C1 : 1.000
D : 110.400
E : 10.800

Pim: 45 x 91



Piston Özellikleri
(Piston Features)

Segman Taşıyıcı
(Ring Carrier)
Soğutma Kanallı
(Coolin Gallery)
Yağ Püskürtme Oyuğu
(Oil Jet Cut-out)
Gözarası Konik
(Conical Eye Gap)



Piston Parça No
(Piston Part No)

87-820800-02
87-73380-STD



Segman Seti
(Ring Set)

06-820800-20-STD

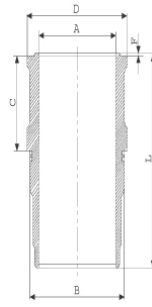
3.500 CR KV1
3.000 P F14
4.000 CR GOE

Goetze® LKZ-Ring®



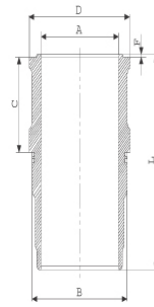
Silindir Gömleği
(Liner)

14-749630-00 WH
B : 125.685
L : 235.370
D : 130.948
C : 123.039
F : 1.250

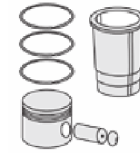


O-RING BİLGİ(O-Ring
Information)
50-35047-60/0
1x 120*124*4 FPM

14-749640-00 WH
B : 125.685
L : 235.370
D : 131.200
C : 124.250
F : 1.250

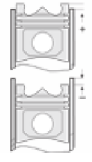


C:1,20 mm Uzun
(C:1,20 mm Long)



Silindir Kit
(Assembly Set)

89-820800-02-STD
89-73380-STD



Piston - Blok Montaj
Yüksekliği
(Piston - Block
Assembly Height)

1,70 mm conta
(Notch) +0,15 / +0,48

