



CUMMINS - Ø 114

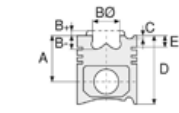
87-73383-STD



Motor Özellikleri
(Engine Specifications)

İmalatçı (Manufacturer):
Cummins
Çap (Diameter): 114
FM Grup No: 2128

QSC 8.3
6 Sil. Dizel
365-447 KW-490-600
HP
320LC-7, CLG 862 III,
CLG 936LC, İŞ MAKİNASI
(Heavy Machinery),
R320LC-9, WA430-6



Piston Ölçüleri
(Piston Dimensions)

A : 79.000
B- : 14.500
BØ : 80.700
D : 115.700
E : 11.200

Pim: 45 x 91



Piston Özellikleri
(Piston Features)

Çift Segman Taşıyıcı
Gözarası Konik
(Double Ring Carrier
Conical Eye Gap)



Piston Parça No
(Piston Part No)

87-819600-22
87-73383-STD



Segman Seti
(Ring Set)

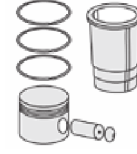
06-819600-00-STD

3.500 CRP KV1
3.000 P F14
4.000 CRP STD

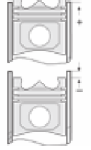
Goetze® LKZ-Ring®



Silindir Gömleği
(Liner)



Silindir Kit
(Assembly Set)



Piston - Blok Montaj
Yüksekliği
(Piston - Block
Assembly Height)

