

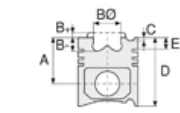


**Motor Özellikleri**  
(Engine Specifications)

İmalatçı (Manufacturer):  
Cummins  
Çap (Diameter): 125  
FM Grup No: 2119

**ISM 410 E20 EURO 3**  
**ISM-M11**

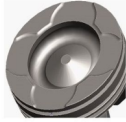
6 Sil. Dizel 10800cc  
300 Kw-410 ps  
ISM CM 876E,  
ISM CM 875, ISM CM 876,  
PRO 1142 EURO 3,  
QSMII CM 876  
2007...



**Piston Ölçüleri**  
(Piston Dimensions)

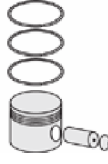
A : 75.350  
B - : 20.000  
BØ : 78.300  
C1 : 1.400  
C2 : 1.400  
D : 113.050  
E : 6.000

Pim: 54 x 102



**Piston Özellikleri**  
(Piston Features)

Gözarası Konik  
(Conical Eye Gap)



**Piston Parça No**  
(Piston Part No)

87-820900-02  
87-75009-STD  
Çift parçalı piston  
(Articulated Piston)



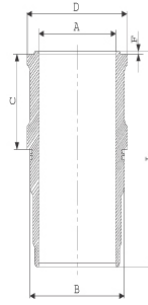
**Segman Seti**  
(Ring Set)

06-820900-20-STD  
3.150 CR KV1  
3.150 CR KV1  
4.000 NT ST

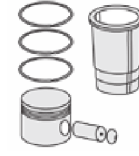


**Silindir Gömleği**  
(Liner)

14-740090-00-WH  
B : 137.750  
L : 240.000  
D : 145.957  
C : 15.000  
F : 1.250

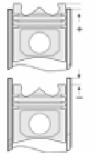


O-RING BİLGİ  
(O-Ring Information)  
50-35048-50/O  
132,5\*137\*3,50 EPDM



**Silindir Kit**  
(Assembly Set)

89-820900-02-STD  
89-75009-STD



**Piston - Blok Montaj**  
**Yüksekliği**  
(Piston - Block  
Assembly Height)

1.80 mm conta(Notch)  
+0,05/+0,30  
2,00 mm conta(Notch)  
+0,15/+0,45

