



RVI - Ø 120

06-125800-20-STD



**Motor Özellikleri**  
(Engine Specifications)

İmalatçı (Manufacturer):  
RVI  
Çap (Diameter): 120  
FM Grup No: 7403

**M 420**

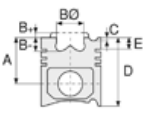
4 Sil. Dizel 6328cc 16,5:1  
GBK6, GBK75, GLC M3,  
GLC RM3, GLC6 M,  
GLC6 M2, L6 M3, L62 M3,  
L62 RM, L62 RM3, L64,  
MDX16 M, MDX24 M  
1970....

**M 520**

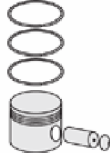
5 Sil. Dizel 7917cc 16,5:1  
ABC, GCK 160, GCK 160B,  
GCK 8, GCK 8R,  
GDK 160A, L 648,  
L 648 RA, L 648M3,  
LE520

**M 620**

6 Sil. Dizel 9500cc 16,5:1  
DPH3 620, GBC 8 MT,  
GCK 200, GCK 205,  
GLM 10, GLM 10 M2



**Piston Ölçüleri**  
(Piston Dimensions)




**Piston Parça No**  
(Piston Part No)



**Segman Seti**  
(Ring Set)

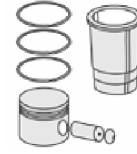
06-125800-20-STD

3.250  CR KV1  
3.000  STD  
3.000  STD  
6.000  CR STD

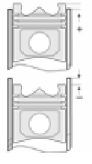
Goetze® LKZ-Ring®



**Silindir Gömleği**  
(Liner)



**Silindir Kit**  
(Assembly Set)



**Piston - Blok Montaj**  
**Yüksekliği**  
(Piston - Block  
Assembly Height)

