



BMW - Ø 86

06-129500-00-STD



**Motor Özellikleri**  
(Engine Specifications)

İmalatçı (Manufacturer):  
BMW  
Çap (Diameter): Ø 86  
FM Grup No: 1417

**M30B 25L**  
6 Sil. Benzinli 2494cc  
Enjektörlü (With Injector)  
525i, 728i  
1981 - 1987

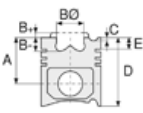
**M30B 25V**  
6 Sil. Benzinli 2494cc  
106Kw (145PS)  
2.5CS, 2500, 525  
1976 - 1981

**M30B 25**  
6 Sil. Benzinli 2494cc  
9,1:1 2.5CS, 2500, 525  
1977....

**M30B 28**  
6 Sil. Benzinli 2788cc  
121,5Kw (165PS) 9:1  
Karbüratörlü (With  
Carburetor)  
2800,2800CS, 528  
E12 Serisi  
1974 - 1979

**M30B 28E3**  
6 Sil. Benzinli 2788cc  
121/125Kw (165/170PS) 9:1  
Enjektörlü (With Injector)  
2800i E23 Serisi, 525i  
E12 Serisi, 528i E28 Serisi,  
728i E23 Serisi  
1977....

**M30B 28L**  
6 Sil. Benzinli 2788cc  
135Kw (184PS) 9,3:1  
Enjektörlü (With Injector)  
2500,2800, 525, 525i,  
528i, 628i, 728i, 530,  
628 Csi  
1977 - 1987



**Piston Ölçüleri**  
(Piston Dimensions)



**Piston Parça No**  
(Piston Part No)



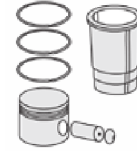
**Segman Seti**  
(Ring Set)

06-129500-00-STD  
06-129507-00 0,50 mm

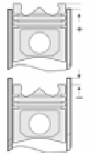
1.750 CRP KV1  
2.000 P STD  
4.000 CRP STD



**Silindir Gömleği**  
(Liner)



**Silindir Kit**  
(Assembly Set)



**Piston - Blok Montaj**  
Yüksekliği  
(Piston - Block  
Assembly Height)