



MAN - Ø 112

06-285500-20-STD



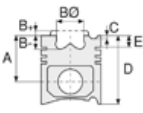
**Motor Özellikleri**  
(Engine Specifications)

İmalatçı (Manufacturer):  
MAN

Çap (Diameter): Ø 112  
FM Grup No: 5442

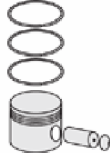
**D 1246**  
6 Sil. Dizel  
96Kw (130 PS) 23:1  
1953 - 1976

**MV3A**  
6 Sil. Dizel 6871cc  
1953 - 1976



**Piston Ölçüleri**  
(Piston Dimensions)

**Piston Özellikleri**  
(Piston Features)



**Piston Parça No**  
(Piston Part No)



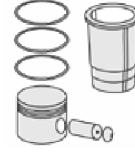
**Segman Seti**  
(Ring Set)

06-285500-20-STD  
06-285505-20 0,25 mm

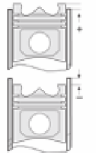
2.500 CR IKA  
2.500 STD  
2.500 STD  
5.000 STD



**Silindir Gömleği**  
(Liner)



**Silindir Kit**  
(Assembly Set)



**Piston - Blok Montaj**  
Yüksekliği  
(Piston - Block  
Assembly Height)

