



PEUGEOT- Ø 84

06-312900-00-STD



**Motor Özellikleri**  
(Engine Specifications)

İmalatçı (Manufacturer):  
PEUGEOT  
Çap (Diameter): Ø 84  
FM Grup No: 7110

**XC5/P**

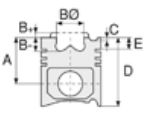
4 Sil. Benzinli 1618cc 7.6:1  
2. Seri 404, J7C/CP/CS/CT/T  
1968 - 1980

**Xc6**

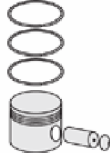
4 Sil. Benzinli 1618cc 8, 35:1  
404  
1970...

**XC7/P**

4 Sil. Benzinli 1618cc 7, 6:1  
404 Utilitaire U10 / U8A,  
504 CLE (E01) / L(E01),  
505 A01, A02, A03, J7E,  
F, FP, FS, FT, P2, PW, PX,  
PY, P2, J9 A10  
1968 - 1990



**Piston Ölçüleri**  
(Piston Dimensions)



**Piston Parça No**  
(Piston Part No)



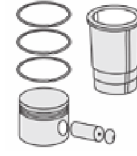
**Segman Seti**  
(Ring Set)

06-312900-00-STD

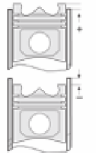
2.000 CRP IKA  
2.000 P STD  
4.500 P STD



**Silindir Gömleği**  
(Liner)



**Silindir Kit**  
(Assembly Set)



**Piston - Blok Montaj**  
Yüksekliği  
(Piston - Block  
Assembly Height)

