



Motor Özellikleri
(Engine Specifications)

İmalatçı (Manufacturer):
MERCEDES BENZ LKW
Çap (Diameter): Ø 130
FM Grup No: 5969

**OM 441.905-909/
911-920**

6 Sil. Dizel 11309cc
150/165 Kw (204/224 PS)
16,9:1 Motor No: 512443
1222, 1224, 1422, 1622,
1722, 1733, 1824, 1922,
2222, 2225, 2422,
O 303, O 404
1988...

OM 442

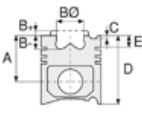
8 Sil. Dizel 15080cc
218 Kw (296 PS) 16,9:1
Motor No: 512443 1225,
1226, 1227, 1228, 1426,
1428, 1429, 1442, 1625,
1628, 1629, 1726, 1728,
1729, 1735, 1926, 1928,
1929, 2225, 2228, 2229,
2422, 2426, 2427, 2429,
2527, 2529, 2629, 3229,
3328, 3529, 3535,
O 303, O 404
1988...

OM 443.905

10 Sil. Dizel 18848cc
265 Kw (360 PS) 16, 9:1
Motor No: 512443
ENDUSTRIYEL (Industrial)
1988...

OM 444

12 Sil. Dizel 22618cc 16,9:1
Motor No: 512443
ENDUSTRIYEL (Industrial)
1988...



Piston Ölçüleri
(Piston Dimensions)



Piston Parça No
(Piston Part No)



Segman Seti
(Ring Set)

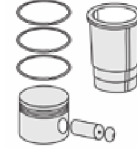
06-742300-80-STD

3.000 CK KV1
3.000 CR IKA
4.000 CR STD

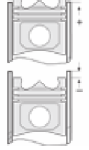
Goetze® LKZ-Ring®



Silindir Gömleği
(Liner)



Silindir Kit
(Assembly Set)



Piston - Blok Montaj
Yüksekliği
(Piston - Block
Assembly Height)

