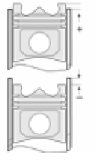
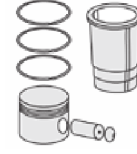
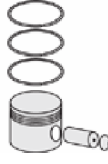
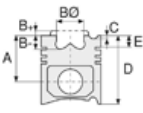




CASE - Ø 110,05

86-70316-STD



Motor Özellikleri
(Engine Specifications)

Piston Ölçüleri
(Piston Dimensions)

Piston Parça No
(Piston Part No)

Segman Seti
(Ring Set)

Silindir Gömleği
(Liner)

Silindir Kit
(Assembly Set)

Piston - Blok Montaj
Yüksekliği
(Piston - Block
Assembly Height)

İmalatçı (Manufacturer):
CASE
Çap (Diameter): Ø 110,05
FM Grup No: 1601

A : 60.320
B- : 19.350
BØ : 58.700
BX : 8.740
C1 : 5.510
D : 105.560
E : 15.870

86-70316-STD
86-70316-STD

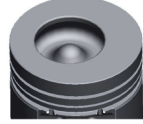
2.380
2.380
2.380
4.760

AD3/55
3 Sil. Dizel 2695cc 17:1
Direkt Püskürtme
(Direct Spray)

Pim: 31,75 x 87,3



AD4/55
4 Sil. Dizel 3594cc 17:1
Direkt Püskürtme /
Perkins ile ortak motor
(Direct Spray / Common
Engine With Perkins)



Piston Özellikleri
(Piston Features)

Gözarası Düz
(Flat Eye Gap)

DAWID BROWN 1190,
DAWID BROWN 1194,
DAWID BROWN 780,
DAWID BROWN 880,
DAWID BROWN 885

DAWID BROWN 1200,
DAWID BROWN 1210,
DAWID BROWN 1212,
DAWID BROWN 1290,
DAWID BROWN 1294,
DAWID BROWN 1390,
DAWID BROWN 995,
DAWID BROWN 996

